

Recombinant

DGRmAb®

TTF1 (DGR14533) Rabbit mAb (PBS Only)

db13136-PBS

Package : 100µg

Product Name : TTF1 (DGR14533) Rabbit mAb (PBS Only)**Cat.No.:** db13136-PBS**Synonyms :** BCH; BHC; NK-2; TEBP; TTF1; NKX2A; NMTC1; T/EBP; TITF1; TTF-1; NKX2.1**Application :** WB, IHC-P**Reactivity :** Human,Mouse,Rat**Host species :** Rabbit**Background**

This gene encodes a protein initially identified as a thyroid-specific transcription factor. The encoded protein binds to the thyroglobulin promoter and regulates the expression of thyroid-specific genes but has also been shown to regulate the expression of genes involved in morphogenesis. Mutations and deletions in this gene are associated with benign hereditary chorea, choreoathetosis, congenital hypothyroidism, and neonatal respiratory distress, and may be associated with thyroid cancer. Multiple transcript variants encoding different isoforms have been found for this gene. This gene shares the symbol/alias 'TTF1' with another gene, transcription termination factor 1, which plays a role in ribosomal gene transcription. [provided by RefSeq, Feb 2014]

Immunogen

A synthetic peptide of human TTF1

Gene ID

7080

Swiss Prot

P43699

Synonyms

BCH; BHC; NK-2; TEBP; TTF1; NKX2A; NMTC1; T/EBP; TITF1; TTF-1; NKX2.1

Reactivity

Human,Mouse,Rat

Application

WB, IHC-P

Recommended dilutionWB: 1:1000
IHC-P: 1:100-1:200**Calculated MW**

39 kDa

Observed MW

39 kDa

Host species

Rabbit

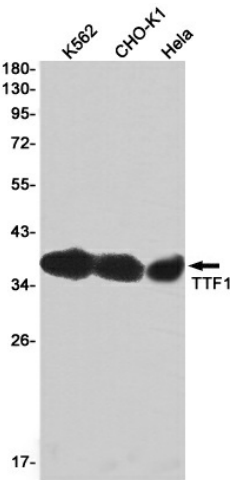
Clonality

Monoclonal

Clonality No.

DGR14533

| | |
|-------------------|---|
| Isotype | IgG |
| Purity | Affinity Purification |
| Conjugation | Un-conjugated |
| Concentration | 1 mg/ml |
| Formulation | PBS Only |
| Storage Stability | Store at -20°C. Recommended to aliquot into single-use vials. Supplied in 1X PBS (pH 7.4). BSA and Azide Free. Stable for 12 months from date of receipt. |



Western blot detection of TTF1 in K562,CHO-K1,HeLa cell lysates using [db13136](#)(1:1000 diluted).