

Recombinant

DGRmAb®

S100 alpha 2/S100A2 (DGR33501) Rabbit mAb (PBS Only)

db13132-PBS

Package : 10µg 100µg

Product Name : S100 alpha 2/S100A2 (DGR33501) Rabbit mAb (PBS Only)**Cat.No.:** db13132-PBS**Synonyms** : CAN19; S100L**Application** : WB, IHC, ICC/IF, FC, IP**Reactivity** : Human**Host species** : Rabbit**Background**

The protein encoded by this gene is a member of the S100 family of proteins containing 2 EF-hand calcium-binding motifs. S100 proteins are localized in the cytoplasm and/or nucleus of a wide range of cells, and involved in the regulation of a number of cellular processes such as cell cycle progression and differentiation. S100 genes include at least 13 members which are located as a cluster on chromosome 1q21. This protein may have a tumor suppressor function. Chromosomal rearrangements and altered expression of this gene have been implicated in breast cancer.

[provided by RefSeq, Jul 2008]

Immunogen

A synthetic peptide of human S100 alpha 2/S100A2

Gene ID

6273

Swiss Prot

P29034

Synonyms

CAN19; S100L

Reactivity

Human

Application

WB, IHC, ICC/IF, FC, IP

Calculated MW

11 kDa

Observed MW

11 kDa

Host species

Rabbit

Clonality

Monoclonal

Clonality No.

DGR33501

Isotype

IgG

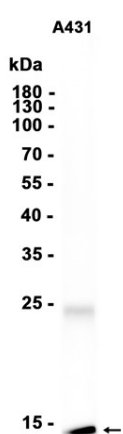
Purity

Affinity Purification

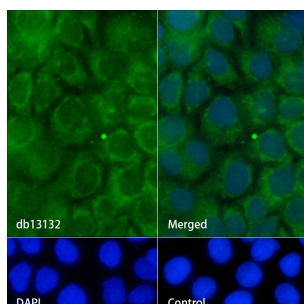
Conjugation

Un-conjugated

Concentration	1 mg/mL
Formulation	PBS Only
Storage Stability	Store at -20°C. Recommended to aliquot into single-use vials. Supplied in 1X PBS (pH 7.4). BSA and Azide Free. Stable for 12 months from date of receipt.



Western blot analysis of extracts from A431 cells using [db13132](#) at 1:1000.



Immunofluorescence analysis of A431 cells labelling S100 alpha 2/S100A2 with [db13132](#).

The cells were fixed with cold 100% methanol (10min, 4°C) and blocked in 1% BSA/10% normal goat serum/0.3M glycine in 0.1% PBS-Tween 20 for 1h. The cells were then incubate with [db13132](#) (1:100) at room temprature for 1h, followed by a further incubation at room temperature for 45min with Goat Anti Rabbit IgG (H+L)-AF488 ([db10005](#), shown in green). Nuclear DNA was labeled in blue with DAPI.

Control: Secondary antibody only.