

Recombinant

DGRmAb®

PHAPI2 (DGR20028) Rabbit mAb (PBS Only)

db12884-PBS

Package : 10µg 100µg

Product Name : PHAPI2 (DGR20028) Rabbit mAb (PBS Only)

Cat.No.: db12884-PBS

Synonyms : APRIL; SSP29; PHAPI2

Application : WB, IHC-P, ICC/IF, FC

Reactivity : Human,Mouse,Rat

Host species : Rabbit

Background

Multifunctional protein working as a cell cycle progression factor as well as a cell survival factor. Required for the progression from the G1 to the S phase. Anti-apoptotic protein which functions as a caspase-3 inhibitor. Has no phosphatase 2A (PP2A) inhibitor activity (By similarity). Exhibits histone chaperone properties, stimulating core histones to assemble into a nucleosome.

Immunogen

A synthetic peptide of human PHAPI2

Gene ID

10541

Swiss Prot

Q92688

Synonyms

APRIL; SSP29; PHAPI2

Reactivity

Human,Mouse,Rat

Application

WB, IHC-P, ICC/IF, FC

Calculated MW

29 kDa

Observed MW

29 kDa

Host species

Rabbit

Clonality

Monoclonal

Clonality No.

DGR20028

Isotype

IgG

Purity

Affinity Purification

Conjugation

Un-conjugated

Concentration

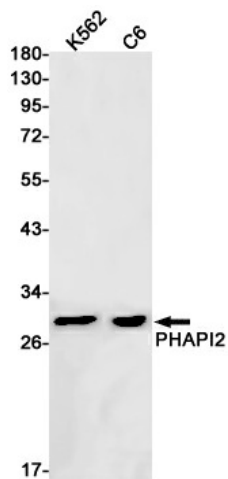
1 mg/mL

Formulation

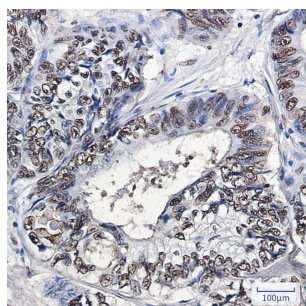
PBS Only

Storage Stability

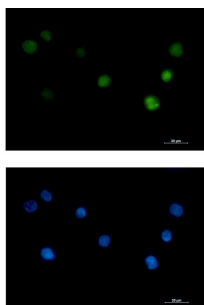
Store at -20°C. Recommended to aliquot into single-use vials. Supplied in 1X PBS (pH 7.4). BSA and Azide Free. Stable for 12 months from date of receipt.



Western blot detection of PHAPI2 in K562,C6 cell lysates using PHAPI2 antibody(1:1000 diluted).



Immunohistochemical analysis of paraffin-embedded human colon cancer tissue using [db12884](#) antibody.



Immunofluorescent analysis of K562 cells using [db12884](#) antibody (green), and DAPI (blue).