

Recombinant

DGRmAb®

## Neurofilament heavy polypeptide (DGR14226) Rabbit mAb (PBS Only)

db12729-PBS

Package : 10µg 100µg

**Product Name** : Neurofilament heavy polypeptide (DGR14226) Rabbit mAb (PBS Only)**Cat.No.:** db12729-PBS**Synonyms** : NFH; CMT2CC**Application** : WB, IHC-P, ICC/IF**Reactivity** : Human,Mouse,Rat**Host species** : Rabbit**Background**

Neurofilaments are type IV intermediate filament heteropolymers composed of light, medium, and heavy chains. Neurofilaments comprise the axoskeleton and functionally maintain neuronal caliber. They may also play a role in intracellular transport to axons and dendrites. This gene encodes the heavy neurofilament protein. This protein is commonly used as a biomarker of neuronal damage and susceptibility to amyotrophic lateral sclerosis (ALS) has been associated with mutations in this gene. [provided by RefSeq, Oct 2008]

**Immunogen**

Recombinant protein of human Neurofilament heavy polypeptide

**Gene ID**

4744

**Swiss Prot**

P12036

**Synonyms**

NFH; CMT2CC

**Reactivity**

Human,Mouse,Rat

**Application**

WB, IHC-P, ICC/IF

**Calculated MW**

113 kDa

**Observed MW**

180-220 kDa

**Host species**

Rabbit

**Clonality**

Monoclonal

**Clonality No.**

DGR14226

**Isotype**

IgG

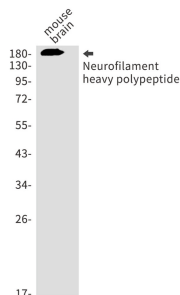
**Purity**

Affinity Purification

**Conjugation**

Un-conjugated

<b>Concentration</b>	1 mg/mL
<b>Formulation</b>	PBS Only
<b>Storage Stability</b>	Store at -20°C. Recommended to aliquot into single-use vials. Supplied in 1X PBS (pH 7.4). BSA and Azide Free. Stable for 12 months from date of receipt.



Western blot detection of Neurofilament heavy polypeptide in mouse brain using Neurofilament heavy polypeptide antibody.