

Recombinant

DGRmAb®

## Extracellular matrix protein 1 (DGR17048) Rabbit mAb (PBS Only)

db12475-PBS

Package : 10µg 100µg

**Product Name** : Extracellular matrix protein 1 (DGR17048) Rabbit mAb (PBS Only)**Cat.No.:** db12475-PBS**Synonyms** : URBWD**Application** : WB, IHC-P, ICC/IF, FC, IP**Reactivity** : Human,Rat**Host species** : Rabbit**Background**

This gene encodes a soluble protein that is involved in endochondral bone formation, angiogenesis, and tumor biology. It also interacts with a variety of extracellular and structural proteins, contributing to the maintenance of skin integrity and homeostasis. Mutations in this gene are associated with lipoid proteinosis disorder (also known as hyalinosis cutis et mucosae or Urbach-Wiethe disease) that is characterized by generalized thickening of skin, mucosae and certain viscera. Alternatively spliced transcript variants encoding distinct isoforms have been described for this gene. [provided by RefSeq, Feb 2011]

**Immunogen**

A synthetic peptide of human Extracellular matrix protein 1

**Gene ID**

1893

**Swiss Prot**

Q16610

**Synonyms**

URBWD

**Reactivity**

Human,Rat

**Application**

WB, IHC-P, ICC/IF, FC, IP

**Calculated MW**

61 kDa

**Observed MW**

61 kDa

**Host species**

Rabbit

**Clonality**

Monoclonal

**Clonality No.**

DGR17048

**Isotype**

IgG

**Purity**

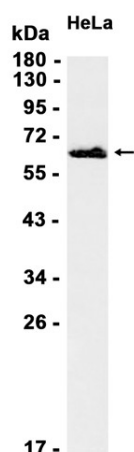
Affinity Purification

**Conjugation**

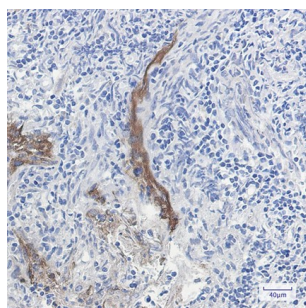
Un-conjugated

---

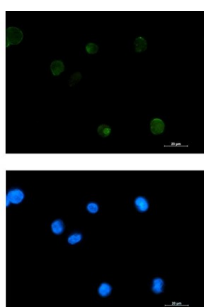
<b>Concentration</b>	1 mg/mL
<b>Formulation</b>	PBS Only
<b>Storage Stability</b>	Store at -20°C. Recommended to aliquot into single-use vials. Supplied in 1X PBS (pH 7.4). BSA and Azide Free. Stable for 12 months from date of receipt.



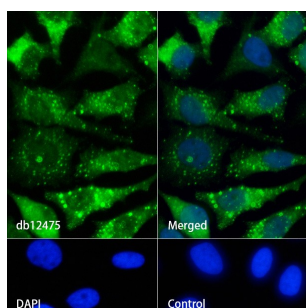
Western blot analysis of extracts from HeLa cells using [db12475](#) at 1:1000.



Immunohistochemical analysis of paraffin-embedded human tonsil using [db12475](#) antibody.



Immunofluorescent analysis of K562 cells using [db12475](#) antibody (green), and DAPI (blue).



Immunofluorescence analysis of HeLa cells labelling Extracellular matrix protein 1 with [db12475](#).

The cells were fixed with 4% PFA (10min, RT) followed by treatment with 0.1% Triton X-100 (10min, RT), and blocked in 1% BSA/10% normal goat serum/0.3M glycine in 0.1% PBS-Tween 20 for 1h. The cells were then incubate with [db12475](#) (1:100) at room temprature for 1h, followed by a further incubation at room temperature for 45min with Goat Anti Rabbit IgG (H+L)-AF488 ([db10005](#), shown in green). Nuclear DNA was labeled in blue with DAPI.

Control: Secondary antibody only.