

Recombinant

DGRmAb®

Cathepsin B (DGR18146) Rabbit mAb (PBS Only)

db12432-PBS

Package : 100µg

Product Name : Cathepsin B (DGR18146) Rabbit mAb (PBS Only)**Cat.No.:** db12432-PBS**Synonyms** : CB**Application** : WB, IHC-P, ICC/IF, FC**Reactivity** : Mouse,Rat**Host species** : Rabbit**Background**

This gene encodes a member of the peptidase C1 family and preproprotein that is proteolytically processed to generate multiple protein products. These products include the cathepsin B light and heavy chains, which can dimerize to generate the double chain form of the enzyme. This enzyme is a lysosomal cysteine protease with both endopeptidase and exopeptidase activity that may play a role in protein turnover. Homozygous knockout mice for this gene exhibit reduced pancreatic damage following induced pancreatitis and reduced hepatocyte apoptosis in a model of liver injury. Pseudogenes of this gene have been identified in the genome. [provided by RefSeq, Aug 2015]

Immunogen

Recombinant protein of mouse Cathepsin B

Gene ID

13030

Swiss Prot

P10605

Synonyms

CB

Reactivity

Mouse,Rat

Application

WB, IHC-P, ICC/IF, FC

Recommended dilutionWB: 1:1000
IHC-P: 1:200-1:1000
ICC/IF: 1:100-1:200
FC: 1:200-1:500**Calculated MW**

37 kDa

Observed MW

44,27,24 kDa

Host species

Rabbit

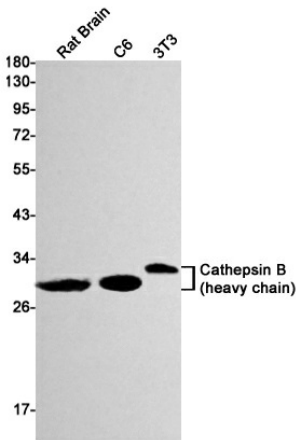
Clonality

Monoclonal

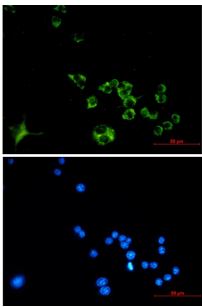
Clonality No.

DGR18146

Isotype	IgG
Purity	Affinity Purification
Conjugation	Un-conjugated
Concentration	1 mg/ml
Formulation	PBS Only
Storage Stability	Store at -20°C. Recommended to aliquot into single-use vials. Supplied in 1X PBS (pH 7.4). BSA and Azide Free. Stable for 12 months from date of receipt.



Western blot detection of Cathepsin B in Rat Brain,C6,3T3 cell lysates using [db12432](#)(1:1000 diluted).



Immunofluorescent analysis of Raw264.7 cells using [db12432](#)