

Recombinant

DGRmAb®

PUMA (DGR14872) Rabbit mAb (PBS Only)

db12341-PBS

Package : 10µg 100µg

Product Name : PUMA (DGR14872) Rabbit mAb (PBS Only)**Cat.No.:** db12341-PBS**Synonyms** : JFY1; PUMA; JFY-1**Application** : WB, IHC-P, ICC/IF, FC**Reactivity** : Human**Host species** : Rabbit**Background**

This gene encodes a member of the BCL-2 family of proteins. This family member belongs to the BH3-only pro-apoptotic subclass. The protein cooperates with direct activator proteins to induce mitochondrial outer membrane permeabilization and apoptosis. It can bind to anti-apoptotic Bcl-2 family members to induce mitochondrial dysfunction and caspase activation. Because of its pro-apoptotic role, this gene is a potential drug target for cancer therapy and for tissue injury. Alternative splicing results in multiple transcript variants. [provided by RefSeq, Dec 2011]

Immunogen

A synthetic peptide of human PUMA

Gene ID

27113

Swiss Prot

Q9BXH1

Synonyms

JFY1; PUMA; JFY-1

Reactivity

Human

Application

WB, IHC-P, ICC/IF, FC

Calculated MW

21 kDa

Observed MW

21 kDa

Host species

Rabbit

Clonality

Monoclonal

Clonality No.

DGR14872

Isotype

IgG

Purity

Affinity Purification

Conjugation

Un-conjugated

Concentration

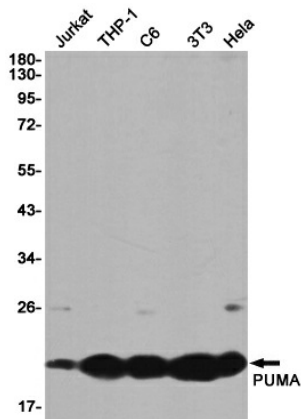
1 mg/mL

Formulation

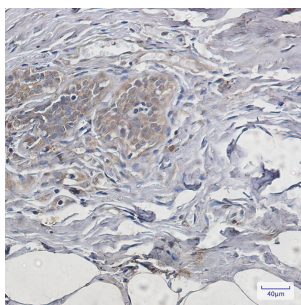
PBS Only

Storage Stability

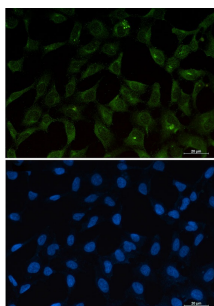
Store at -20°C. Recommended to aliquot into single-use vials. Supplied in 1X PBS (pH 7.4). BSA and Azide Free. Stable for 12 months from date of receipt.



Western blot detection of PUMA in Jurkat, THP-1, C6, 3T3, HeLa cell lysates using PUMA antibody (1:1000 diluted).



Immunohistochemical analysis of paraffin-embedded human breast cancer using db12341 antibody.



Immunofluorescent analysis of 293T cells using db12341 antibody (green), and DAPI (blue).