

Recombinant

DGRmAb®

## TAK1 (DGR14186) Rabbit mAb (PBS Only)

db12332-PBS

Package : 10µg 100µg

**Product Name** : TAK1 (DGR14186) Rabbit mAb (PBS Only)**Cat.No.:** db12332-PBS**Synonyms** : CSCF; FMD2; TAK1; MEKK7; TGF1a**Application** : WB, IHC, ICC/IF, FC**Reactivity** : Human, Mouse, Rat**Host species** : Rabbit**Background**

The protein encoded by this gene is a member of the serine/threonine protein kinase family. This kinase mediates the signaling transduction induced by TGF beta and morphogenetic protein (BMP), and controls a variety of cell functions including transcription regulation and apoptosis. In response to IL-1, this protein forms a kinase complex including TRAF6, MAP3K7P1/TAB1 and MAP3K7P2/TAB2; this complex is required for the activation of nuclear factor kappa B. This kinase can also activate MAPK8/JNK, MAP2K4/MKK4, and thus plays a role in the cell response to environmental stresses. Four alternatively spliced transcript variants encoding distinct isoforms have been reported. [provided by RefSeq, Jul 2008]

**Immunogen**

A synthetic peptide of human TAK1

**Gene ID**

6885

**Swiss Prot**

O43318

**Synonyms**

CSCF; FMD2; TAK1; MEKK7; TGF1a

**Reactivity**

Human, Mouse, Rat

**Application**

WB, IHC, ICC/IF, FC

**Calculated MW**

67 kDa

**Observed MW**

78 kDa

**Host species**

Rabbit

**Clonality**

Monoclonal

**Clonality No.**

DGR14186

**Isotype**

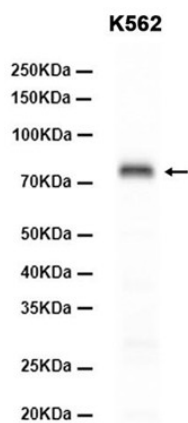
IgG

**Purity**

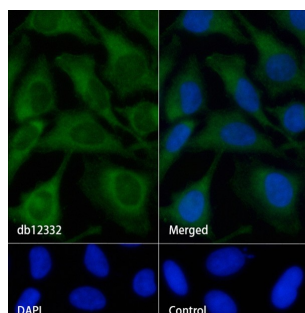
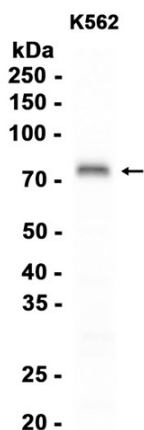
Affinity Purification

<b>Conjugation</b>	Un-conjugated
<b>Concentration</b>	1 mg/mL
<b>Formulation</b>	PBS Only
<b>Storage Stability</b>	Store at -20°C. Recommended to aliquot into single-use vials. Supplied in 1X PBS (pH 7.4). BSA and Azide Free. Stable for 12 months from date of receipt.

Western blot analysis of extracts from K562 cells using [db12332](#) at 1:2000.



Western blot analysis of extracts from K562 cells using [db12332](#) at 1:2000.



Immunofluorescence analysis of HeLa cells labelling TAK1 with [db12332](#).

The cells were fixed with cold 100% methanol (10min, 4°C) and blocked in 1% BSA/10% normal goat serum/0.3M glycine in 0.1% PBS-Tween 20 for 1h. The cells were then incubate with [db12332](#) (1:200) at room temprature for 1h, followed by a further incubation at room temperature for 45min with Goat Anti Rabbit IgG (H+L)-AF488 ([db10005](#), shown in green). Nuclear DNA was labeled in blue with DAPI.

Control: Secondary antibody only.

