

Recombinant

DGRmAb®

## Cyclin A2 (DGR14328) Rabbit mAb (PBS Only)

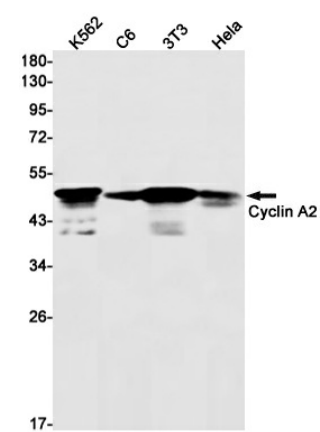
db12205-PBS

Package : 100µg

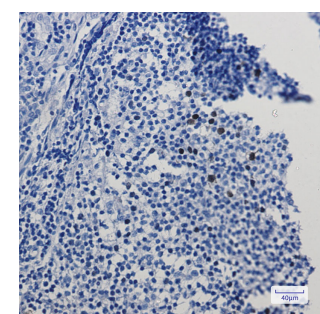
**Product Name** : Cyclin A2 (DGR14328) Rabbit mAb (PBS Only)**Cat.No.:** db12205-PBS**Synonyms** : CCN1; CCNA**Application** : WB, IHC-P, ICC/IF, IP**Reactivity** : Human,Mouse**Host species** : Rabbit

<b>Background</b>	The protein encoded by this gene belongs to the highly conserved cyclin family, whose members function as regulators of the cell cycle. This protein binds and activates cyclin-dependent kinase 2 and thus promotes transition through G1/S and G2/M. [provided by RefSeq, Aug 2016]
<b>Immunogen</b>	A synthetic peptide of human Cyclin A2
<b>Gene ID</b>	890
<b>Swiss Prot</b>	P20248
<b>Synonyms</b>	CCN1; CCNA
<b>Reactivity</b>	Human,Mouse
<b>Application</b>	WB, IHC-P, ICC/IF, IP
<b>Recommended dilution</b>	WB: 1:1000-1:5000 IHC-P: 1:200-1:500 ICC/IF: 1:100-1:200 IP: 1:50
<b>Calculated MW</b>	49 kDa
<b>Observed MW</b>	49 kDa
<b>Host species</b>	Rabbit
<b>Clonality</b>	Monoclonal
<b>Clonality No.</b>	DGR14328
<b>Isotype</b>	IgG
<b>Purity</b>	Affinity Purification

Conjugation	Un-conjugated
Concentration	1 mg/ml
Formulation	PBS Only
Storage Stability	Store at -20°C. Recommended to aliquot into single-use vials. Supplied in 1X PBS (pH 7.4). BSA and Azide Free. Stable for 12 months from date of receipt.



Western blot detection of Cyclin A2 in K562,C6,3T3,Hela cell lysates using [db12205](#)(1:1000 diluted).



Immunohistochemical analysis of paraffin-embedded human tonsil using [db12205](#)