

Recombinant

DGRmAb®

Tuberin (DGR32325) Rabbit mAb (PBS Only)

db12165-PBS

Package : 10µg 100µg

Product Name : Tuberin (DGR32325) Rabbit mAb (PBS Only)

Cat.No.: db12165-PBS

Synonyms : LAM; TSC4; PPP1R160

Application : WB, IHC, ICC/IF, FC, IP

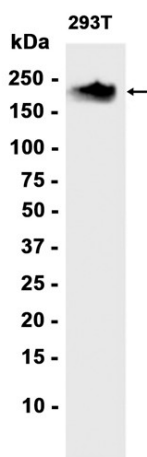
Reactivity : Human

Host species : Rabbit

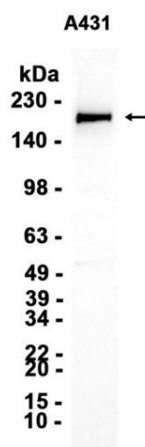
Background	Mutations in this gene lead to tuberous sclerosis complex. Its gene product is believed to be a tumor suppressor and is able to stimulate specific GTPases. The protein associates with hamartin in a cytosolic complex, possibly acting as a chaperone for hamartin. Alternative splicing results in multiple transcript variants encoding different isoforms. [provided by RefSeq, Jul 2008]
Immunogen	A synthetic peptide of human Tuberin
Gene ID	7249
Swiss Prot	P49815
Synonyms	LAM; TSC4; PPP1R160
Reactivity	Human
Application	WB, IHC, ICC/IF, FC, IP
Calculated MW	201 kDa
Observed MW	201 kDa
Host species	Rabbit
Clonality	Monoclonal
Clonality No.	DGR32325
Isotype	IgG
Purity	Affinity Purification
Conjugation	Un-conjugated
Concentration	1 mg/mL
Formulation	PBS Only

Storage Stability

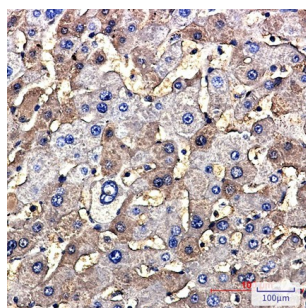
Store at -20°C. Recommended to aliquot into single-use vials. Supplied in 1X PBS (pH 7.4). BSA and Azide Free. Stable for 12 months from date of receipt.



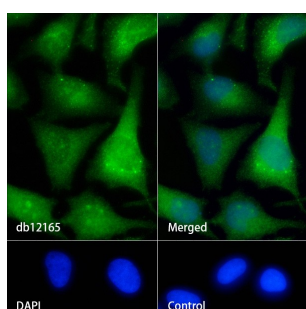
Western blot analysis of extracts from 293T cells using [db12165](#) at 1:1000.



Western blot analysis of extracts from A431 cells using [db12165](#) at 1:1000.



Immunohistochemical analysis of paraffin-embedded human hepatic carcinoma using [db12165](#) antibody.



Immunofluorescence analysis of HeLa cells labelling Tuberin with [db12165](#).

The cells were fixed with 4% PFA (10min, RT) followed by treatment with 0.1% Triton X-100 (10min, RT), and blocked in 1% BSA/10% normal goat serum/0.3M glycine in 0.1% PBS-Tween 20 for 1h. The cells were then incubate with [db12165](#) (1:20) at room temperature for 1h, followed by a further incubation at room temperature for 45min with Goat Anti Rabbit IgG (H+L)-AF488 ([db10005](#), shown in green). Nuclear DNA was labeled in blue with DAPI.

Control: Secondary antibody only.

