

Recombinant

DGRmAb®

HIF1 beta (DGR33628) Rabbit mAb (PBS Only)

db12161-PBS

Package : 100µg

Product Name : HIF1 beta (DGR33628) Rabbit mAb (PBS Only)**Cat.No.:** db12161-PBS**Synonyms :** HIF1B; TANGO; bHLHe2; HIF1BETA; HIF-1beta; HIF1-beta; HIF-1-beta**Application :** WB, IHC-P, FC**Reactivity :** Human,Mouse,Rat**Host species :** Rabbit**Background**

This gene encodes a protein containing a basic helix-loop-helix domain and two characteristic PAS domains along with a PAC domain. The encoded protein binds to ligand-bound aryl hydrocarbon receptor and aids in the movement of this complex to the nucleus, where it promotes the expression of genes involved in xenobiotic metabolism. This protein is also a co-factor for transcriptional regulation by hypoxia-inducible factor 1. Chromosomal translocation of this locus with the ETV6 (ets variant 6) gene on chromosome 12 have been described in leukemias. Alternative splicing results in multiple transcript variants. [provided by RefSeq, Oct 2013]

Immunogen

Recombinant protein of human HIF1 beta

Gene ID

405

Swiss Prot

P27540

Synonyms

HIF1B; TANGO; bHLHe2; HIF1BETA; HIF-1beta; HIF1-beta; HIF-1-beta

Reactivity

Human,Mouse,Rat

Application

WB, IHC-P, FC

Calculated MW

87 kDa

Observed MW

87 kDa

Host species

Rabbit

Clonality

Monoclonal

Clonality No.

DGR33628

Isotype

IgG

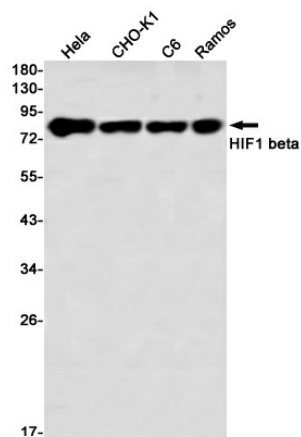
Purity

Affinity Purification

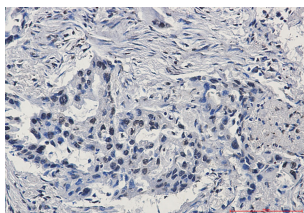
Conjugation

Un-conjugated

Concentration	1 mg/mL
Formulation	PBS Only
Storage Stability	Store at -20°C. Recommended to aliquot into single-use vials. Supplied in 1X PBS (pH 7.4). BSA and Azide Free. Stable for 12 months from date of receipt.



Western blot detection of HIF1 beta in HeLa, CHO-K1, C6, Ramos using HIF1 beta antibody (1:1000 diluted)



Immunohistochemical analysis of paraffin-embedded human lung cancer using [db12161](#) antibody.