

Recombinant

DGRmAb®

P2Y6 (DGR11756) Rabbit mAb (PBS Only)

db12145-PBS

Package : 100µg

Product Name : P2Y6 (DGR11756) Rabbit mAb (PBS Only)**Cat.No.:** db12145-PBS**Synonyms** : P2Y6**Application** : WB, IHC-P, ICC/IF, IP**Reactivity** : Human**Host species** : Rabbit**Background**

The product of this gene belongs to the family of P2 receptors, which is activated by extracellular nucleotides and subdivided into P2X ligand-gated ion channels and P2Y G-protein coupled receptors. This family has several receptor subtypes with different pharmacological selectivity, which overlaps in some cases, for various adenosine and uridine nucleotides. This receptor, which is a G-protein coupled receptor, is responsive to UDP, partially responsive to UTP and ADP, and not responsive to ATP. It is proposed that this receptor mediates inflammatory responses. Alternative splicing results in multiple transcript variants that encode different protein isoforms. [provided by RefSeq, Mar 2013]

Immunogen

A synthetic peptide of human P2Y6

Gene ID

5031

Swiss Prot

Q15077

Synonyms

P2Y6

Reactivity

Human

Application

WB, IHC-P, ICC/IF, IP

Recommended dilution

WB: 1:5000-1:50000

IHC-P: 1:100-1:200

ICC/IF: 1:100-1:200

IP: 1:50

Calculated MW

36 kDa

Observed MW

36 kDa

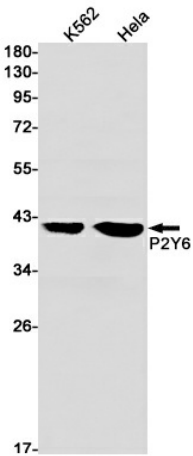
Host species

Rabbit

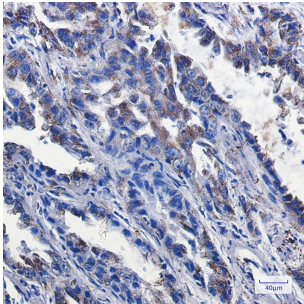
Clonality

Monoclonal

Clonality No.	DGR11756
Isotype	IgG
Purity	Affinity Purification
Conjugation	Un-conjugated
Concentration	1 mg/ml
Formulation	PBS Only
Storage Stability	Store at -20°C. Recommended to aliquot into single-use vials. Supplied in 1X PBS (pH 7.4). BSA and Azide Free. Stable for 12 months from date of receipt.



Western blot detection of P2Y6 in K562,HeLa cell lysates using [db12145](#)(1:1000 diluted).



Immunohistochemical analysis of paraffin-embedded human lung cancer tissue using [db12145](#)