

Recombinant

DGRmAb®

**KDM1A (DGR14386) Rabbit mAb (PBS Only)**

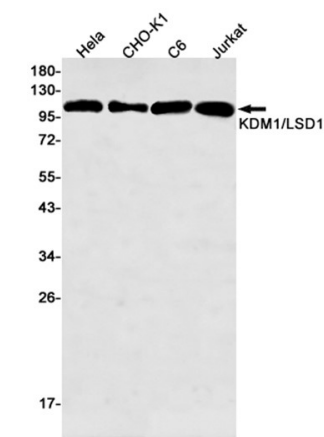
db12048-PBS

Package : 100µg

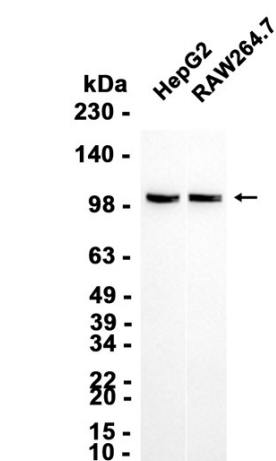
**Product Name** : KDM1A (DGR14386) Rabbit mAb (PBS Only)**Cat.No.:** db12048-PBS**Synonyms** : AOF2; CPRF; KDM1; LSD1; BHC110**Application** : WB, IHC, ICC/IF, FC, IP**Reactivity** : Human, Mouse, Rat**Host species** : Rabbit

<b>Background</b>	This gene encodes a nuclear protein containing a SWIRM domain, a FAD-binding motif, and an amine oxidase domain. This protein is a component of several histone deacetylase complexes, though it silences genes by functioning as a histone demethylase. Alternative splicing results in multiple transcript variants. [provided by RefSeq, Apr 2009]
<b>Immunogen</b>	A synthetic peptide of human KDM1/LSD1
<b>Gene ID</b>	23028
<b>Swiss Prot</b>	O60341
<b>Synonyms</b>	AOF2; CPRF; KDM1; LSD1; BHC110
<b>Reactivity</b>	Human, Mouse, Rat
<b>Application</b>	WB, IHC, ICC/IF, FC, IP
<b>Recommended dilution</b>	WB: 1:2000-1:10000 IHC: 1:50-1:200 ICC/IF: 1:100-1:200 FC: 1:20 IP: 1:20-1:50
<b>Calculated MW</b>	93 kDa
<b>Observed MW</b>	110 kDa
<b>Host species</b>	Rabbit
<b>Clonality</b>	Monoclonal
<b>Clonality No.</b>	DGR14386
<b>Isotype</b>	IgG

Purity	Affinity Purification
Conjugation	Un-conjugated
Concentration	1 mg/ml
Formulation	PBS Only
Storage Stability	Store at -20°C. Recommended to aliquot into single-use vials. Supplied in 1X PBS (pH 7.4). BSA and Azide Free. Stable for 12 months from date of receipt.



Western blot detection of KDM1/LSD1 in HeLa,CHO-K1,C6,Jurkat cell lysates using [db12048](#)(1:500 diluted).



Western blot analysis of extracts from HepG2, RAW264.7 cells using [db12048](#)