

Recombinant

DGRmAb®

CD8 alpha (DGR11690) Rabbit mAb (PBS Only)

db12047-PBS

Package : 100µg

Product Name : CD8 alpha (DGR11690) Rabbit mAb (PBS Only)**Cat.No.:** db12047-PBS**Synonyms** : CD8; MAL; p32; Leu2**Application** : WB, ICC/IF**Reactivity** : Human**Host species** : Rabbit**Background**

The CD8 antigen is a cell surface glycoprotein found on most cytotoxic T lymphocytes that mediates efficient cell-cell interactions within the immune system. The CD8 antigen acts as a coreceptor with the T-cell receptor on the T lymphocyte to recognize antigens displayed by an antigen presenting cell in the context of class I MHC molecules. The coreceptor functions as either a homodimer composed of two alpha chains or as a heterodimer composed of one alpha and one beta chain. Both alpha and beta chains share significant homology to immunoglobulin variable light chains. This gene encodes the CD8 alpha chain. Multiple transcript variants encoding different isoforms have been found for this gene. [provided by RefSeq, Nov 2011]

Immunogen

A synthetic peptide of human CD8

Gene ID

925

Swiss Prot

P01732

Synonyms

CD8; MAL; p32; Leu2

Reactivity

Human

Application

WB, ICC/IF

Recommended dilutionWB: 1:1000
ICC/IF: 1:200-1:500**Calculated MW**

26 kDa

Observed MW

29 kDa

Host species

Rabbit

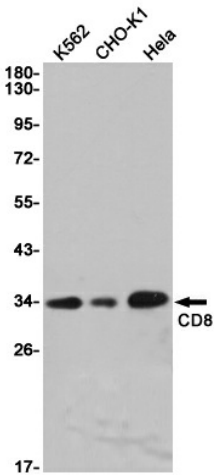
Clonality

Monoclonal

Clonality No.

DGR11690

Isotype	IgG
Purity	Affinity Purification
Conjugation	Un-conjugated
Concentration	1 mg/ml
Formulation	PBS Only
Storage Stability	Store at -20°C. Recommended to aliquot into single-use vials. Supplied in 1X PBS (pH 7.4). BSA and Azide Free. Stable for 12 months from date of receipt.



Western blot detection of CD8 in K562,CHO-K1,HeLa cell lysates using [db12047](#)(1:1000 diluted).