

Recombinant

DGRmAb®

**LAMP2 (DGR31631) Rabbit mAb (PBS Only)**

db12038-PBS

Package : 100µg

**Product Name** : LAMP2 (DGR31631) Rabbit mAb (PBS Only)**Cat.No.:** db12038-PBS**Synonyms** : LAMPB; CD107b; LAMP-2; LGP-96; LGP110**Application** : WB, IHC-P**Reactivity** : Human**Host species** : Rabbit**Background**

The protein encoded by this gene is a member of a family of membrane glycoproteins. This glycoprotein provides selectins with carbohydrate ligands. It may play a role in tumor cell metastasis. It may also function in the protection, maintenance, and adhesion of the lysosome. Alternative splicing of this gene results in multiple transcript variants encoding distinct proteins. [provided by RefSeq, Jul 2008]

**Immunogen**

A synthetic peptide of human LAMP2

**Gene ID**

3920

**Swiss Prot**

P13473

**Synonyms**

LAMPB; CD107b; LAMP-2; LGP-96; LGP110

**Reactivity**

Human

**Application**

WB, IHC-P

**Calculated MW**

45 kDa

**Observed MW**

110 kDa

**Host species**

Rabbit

**Clonality**

Monoclonal

**Clonality No.**

DGR31631

**Isotype**

IgG

**Purity**

Affinity Purification

**Conjugation**

Un-conjugated

**Concentration**

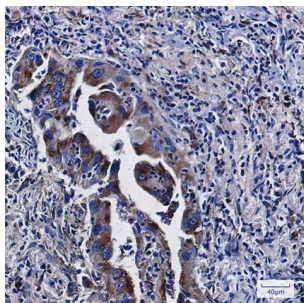
1 mg/ml

**Formulation**

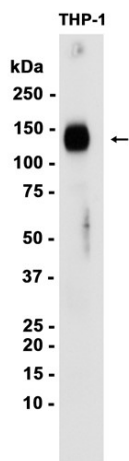
PBS Only

**Storage Stability**

Store at -20°C. Recommended to aliquot into single-use vials. Supplied in 1X PBS (pH 7.4). BSA and Azide Free. Stable for 12 months from date of receipt.



Immunohistochemical analysis of paraffin-embedded human lung cancer using [db12038](#) antibody.



Western blot analysis of extracts from THP-1 cells using [db12038](#) at 1:1000.