

Recombinant

DGRmAb®

## IRF3 (DGR33338) Rabbit mAb (PBS Only)

db12027-PBS

Package : 100µg

**Product Name :** IRF3 (DGR33338) Rabbit mAb (PBS Only)**Cat.No.:** db12027-PBS**Synonyms :** IIAE7**Application :** WB, IHC-P, FC, IP**Reactivity :** Human**Host species :** Rabbit**Background**

This gene encodes a member of the interferon regulatory transcription factor (IRF) family. The encoded protein is found in an inactive cytoplasmic form that upon serine/threonine phosphorylation forms a complex with CREBBP. This complex translocates to the nucleus and activates the transcription of interferons alpha and beta, as well as other interferon-induced genes. The protein plays an important in the innate immune response against DNA and RNA viruses. Alternatively spliced transcript variants encoding multiple isoforms have been observed for this gene. [provided by RefSeq, Jun 2020]

**Immunogen**

A synthetic peptide of human IRF3

**Gene ID**

3661

**Swiss Prot**

Q14653

**Synonyms**

IIAE7

**Reactivity**

Human

**Application**

WB, IHC-P, FC, IP

**Recommended dilution**

WB: 1:1000

IHC-P: 1:100-1:200

FC: 1:20

IP: 1:20

**Calculated MW**

47 kDa

**Observed MW**

47 kDa

**Host species**

Rabbit

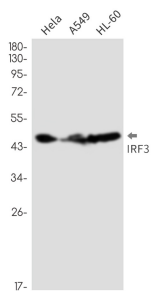
**Clonality**

Monoclonal

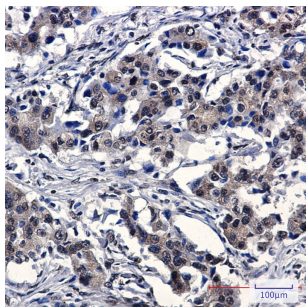
**Clonality No.**

DGR33338

Isotype	IgG
Purity	Affinity Purification
Conjugation	Un-conjugated
Concentration	1 mg/ml
Formulation	PBS Only
Storage Stability	Store at -20°C. Recommended to aliquot into single-use vials. Supplied in 1X PBS (pH 7.4). BSA and Azide Free. Stable for 12 months from date of receipt.



Western blot detection of IRF3 in HeLa,A549,HL-60 cell lysates using [db12027](#)(1:1000 diluted).



Immunohistochemical analysis of paraffin-embedded human lung cancer using [db12027](#)