

Recombinant

DGRmAb®

## Cyclin E2 (DGR11621) Rabbit mAb (PBS Only)

db11965-PBS

Package : 10µg 100µg

**Product Name** : Cyclin E2 (DGR11621) Rabbit mAb (PBS Only)**Cat.No.:** db11965-PBS**Synonyms** : CYCE2**Application** : WB, ICC/IF**Reactivity** : Human,Mouse**Host species** : Rabbit**Background**

The protein encoded by this gene belongs to the highly conserved cyclin family, whose members are characterized by a dramatic periodicity in protein abundance through the cell cycle. Cyclins function as regulators of CDK kinases. Different cyclins exhibit distinct expression and degradation patterns which contribute to the temporal coordination of each mitotic event. This cyclin forms a complex with and functions as a regulatory subunit of CDK2. This cyclin has been shown to specifically interact with CIP/KIP family of CDK inhibitors, and plays a role in cell cycle G1/S transition. The expression of this gene peaks at the G1-S phase and exhibits a pattern of tissue specificity distinct from that of cyclin E1. A significantly increased expression level of this gene was observed in tumor-derived cells. [provided by RefSeq, Jul 2008]

**Immunogen**

A synthetic peptide of human Cyclin E2

**Gene ID**

9134

**Swiss Prot**

O96020

**Synonyms**

CYCE2

**Reactivity**

Human,Mouse

**Application**

WB, ICC/IF

**Calculated MW**

47 kDa

**Observed MW**

47 kDa

**Host species**

Rabbit

**Clonality**

Monoclonal

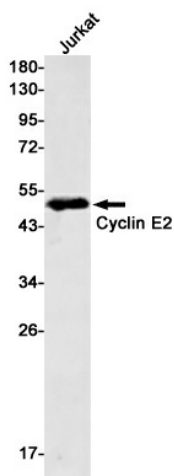
**Clonality No.**

DGR11621

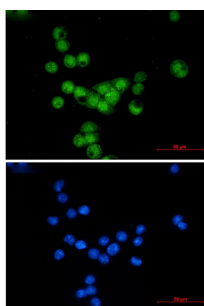
**Isotype**

IgG

<b>Purity</b>	Affinity Purification
<b>Conjugation</b>	Un-conjugated
<b>Concentration</b>	1 mg/mL
<b>Formulation</b>	PBS Only
<b>Storage Stability</b>	Store at -20°C. Recommended to aliquot into single-use vials. Supplied in 1X PBS (pH 7.4). BSA and Azide Free. Stable for 12 months from date of receipt.



Western blot detection of Cyclin E2 in Jurkat cell lysates using Cyclin E2 antibody(1:500 diluted).



Immunofluorescent analysis of MCF-7 cells using db11965 antibody (green), and DAPI (blue).