

Recombinant

DGRmAb®

GRK6 (DGR34035) Rabbit mAb (PBS Only)

db11959-PBS

Package : 100µg

Product Name : GRK6 (DGR34035) Rabbit mAb (PBS Only)**Cat.No.:** db11959-PBS**Synonyms :** GPRK6**Application :** WB**Reactivity :** Human,Mouse**Host species :** Rabbit**Background**

This gene encodes a member of the guanine nucleotide-binding protein (G protein)-coupled receptor kinase subfamily of the Ser/Thr protein kinase family. The protein phosphorylates the activated forms of G protein-coupled receptors thus initiating their deactivation. Several transcript variants encoding different isoforms have been described for this gene. [provided by RefSeq, Jul 2008]

Immunogen

A synthetic peptide of human GRK6

Gene ID

2870

Swiss Prot

P43250

Synonyms

GPRK6

Reactivity

Human,Mouse

Application

WB

Recommended dilution

WB: 1:1000-1:5000

Calculated MW

66 kDa

Observed MW

66 kDa

Host species

Rabbit

Clonality

Monoclonal

Clonality No.

DGR34035

Isotype

IgG

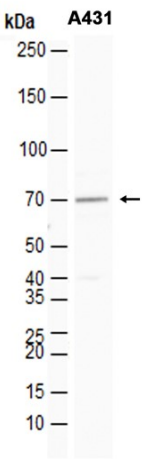
Purity

Affinity Purification

Conjugation

Un-conjugated

Concentration	1 mg/ml
Formulation	PBS Only
Storage Stability	Store at -20°C. Recommended to aliquot into single-use vials. Supplied in 1X PBS (pH 7.4). BSA and Azide Free. Stable for 12 months from date of receipt.



Western blot analysis of extracts from A431 cells tissue using [db11959](#)