

Recombinant

DGRmAb®

Bcl-2 (DGR13485) Rabbit mAb (PBS Only)

db11929-PBS

Package : 100µg

Product Name : Bcl-2 (DGR13485) Rabbit mAb (PBS Only)**Cat.No.:** db11929-PBS**Synonyms** : Bcl-2; PPP1R50**Application** : WB, IHC-P, FC**Reactivity** : Human,Mouse**Host species** : Rabbit**Background**

This gene encodes an integral outer mitochondrial membrane protein that blocks the apoptotic death of some cells such as lymphocytes. Constitutive expression of BCL2, such as in the case of translocation of BCL2 to Ig heavy chain locus, is thought to be the cause of follicular lymphoma. Alternative splicing results in multiple transcript variants. [provided by RefSeq, Feb 2016]

Immunogen

Recombinant protein of human Bcl-2

Gene ID

596

Swiss Prot

P10415

Synonyms

Bcl-2; PPP1R50

Reactivity

Human,Mouse

Application

WB, IHC-P, FC

Calculated MW

26 kDa

Observed MW

26 kDa

Host species

Rabbit

Clonality

Monoclonal

Clonality No.

DGR13485

Isotype

IgG

Purity

Affinity Purification

Conjugation

Un-conjugated

Concentration

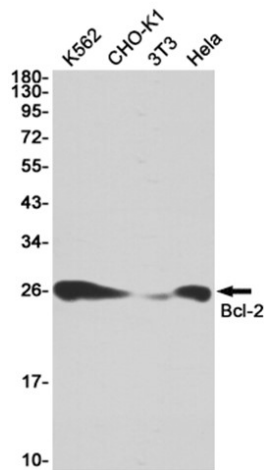
1 mg/ml

Formulation

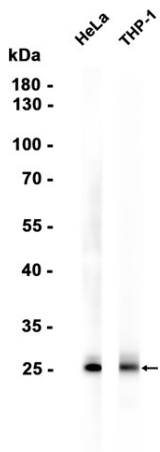
PBS Only

Storage Stability

Store at -20°C. Recommended to aliquot into single-use vials. Supplied in 1X PBS (pH 7.4). BSA and Azide Free. Stable for 12 months from date of receipt.



Western blot detection of Bcl-2 in K562,CHO-K1,3T3,HeLa cell lysates using [db11929](#)(1:1000 diluted).



Western blot analysis of extracts from HeLa, THP-1 cells using [db11929](#)