

Recombinant

DGRmAb®

Integrin beta 1 (DGR15348) Rabbit mAb (PBS Only)

db11811-PBS

Package : 10µg 100µg

Product Name : Integrin beta 1 (DGR15348) Rabbit mAb (PBS Only)

Cat.No.: db11811-PBS

Synonyms : CD29; FNRB; MDF2; VLAB; GPIIA; MSK12; VLA-BETA

Application : WB, IHC-P

Reactivity : Human,Mouse,Rat

Host species : Rabbit

Background

Integrins are heterodimeric proteins made up of alpha and beta subunits. At least 18 alpha and 8 beta subunits have been described in mammals. Integrin family members are membrane receptors involved in cell adhesion and recognition in a variety of processes including embryogenesis, hemostasis, tissue repair, immune response and metastatic diffusion of tumor cells. This gene encodes a beta subunit. Multiple alternatively spliced transcript variants which encode different protein isoforms have been found for this gene. [provided by RefSeq, Jul 2008]

Immunogen

Recombinant protein of human Integrin beta 1

Gene ID

3688

Swiss Prot

P05556

Synonyms

CD29; FNRB; MDF2; VLAB; GPIIA; MSK12; VLA-BETA

Reactivity

Human,Mouse,Rat

Application

WB, IHC-P

Calculated MW

88 kDa

Observed MW

120-160 kDa

Host species

Rabbit

Clonality

Monoclonal

Clonality No.

DGR15348

Isotype

IgG

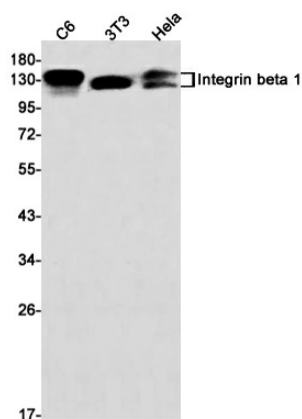
Purity

Affinity Purification

Conjugation

Un-conjugated

Concentration	1 mg/mL
Formulation	PBS Only
Storage Stability	Store at -20°C. Recommended to aliquot into single-use vials. Supplied in 1X PBS (pH 7.4). BSA and Azide Free. Stable for 12 months from date of receipt.



Western blot detection of Integrin beta 1 in C6,3T3,HeLa cell lysates using Integrin beta 1 antibody(1:1000 diluted).