

Recombinant

DGRmAb®

## DDAH1 (DGR14834) Rabbit mAb (PBS Only)

db11744-PBS

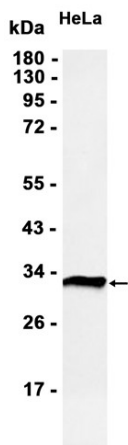
Package : 10µg 100µg

**Product Name** : DDAH1 (DGR14834) Rabbit mAb (PBS Only)**Cat.No.:** db11744-PBS**Synonyms** : DDAH; DDAHI; DDAH-1; HEL-S-16**Application** : WB, IHC-P, ICC/IF, FC, IP**Reactivity** : Human,Mouse,Rat**Host species** : Rabbit

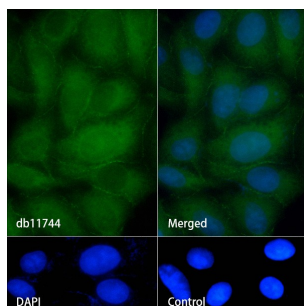
|                      |  |
|----------------------|--|
| <b>Background</b>    | This gene belongs to the dimethylarginine dimethylaminohydrolase (DDAH) gene family. The encoded enzyme plays a role in nitric oxide generation by regulating cellular concentrations of methylarginines, which in turn inhibit nitric oxide synthase activity. [provided by RefSeq, Jul 2008] |
| <b>Immunogen</b>     | A synthetic peptide of human DDAH1   |
| <b>Gene ID</b>       | 23576  |
| <b>Swiss Prot</b>    | O94760   |
| <b>Synonyms</b>      | DDAH; DDAHI; DDAH-1; HEL-S-16  |
| <b>Reactivity</b>    | Human,Mouse,Rat  |
| <b>Application</b>   | WB, IHC-P, ICC/IF, FC, IP  |
| <b>Calculated MW</b> | 31 kDa   |
| <b>Observed MW</b>   | 37 kDa   |
| <b>Host species</b>  | Rabbit   |
| <b>Clonality</b>     | Monoclonal   |
| <b>Clonality No.</b> | DGR14834   |
| <b>Isotype</b>       | IgG  |
| <b>Purity</b>        | Affinity Purification  |
| <b>Conjugation</b>   | Un-conjugated  |
| <b>Concentration</b> | 1 mg/mL  |
| <b>Formulation</b>   | PBS Only   |

**Storage Stability**

Store at -20°C. Recommended to aliquot into single-use vials. Supplied in 1X PBS (pH 7.4). BSA and Azide Free. Stable for 12 months from date of receipt.



Western blot analysis of extracts from HeLa cells using db11744 at 1:1000.



Immunofluorescence analysis of HepG2 cells labelling DDAH1 with db11744.

The cells were fixed with cold 100% methanol (10min, 4°C) and blocked in 1% BSA/10% normal goat serum/0.3M glycine in 0.1% PBS-Tween 20 for 1h. The cells were then incubate with db11744 (1:100) at room temprature for 1h, followed by a further incubation at room temperature for 45min with Goat Anti Rabbit IgG (H+L)-AF488 (db10005, shown in green). Nuclear DNA was labeled in blue with DAPI.

Control: Secondary antibody only.