

Recombinant

DGRmAb®

**Macro H2A.1 (DGR14657) Rabbit mAb (PBS Only)**

db11728-PBS

Package : 100µg

**Product Name** : Macro H2A.1 (DGR14657) Rabbit mAb (PBS Only)**Cat.No.:** db11728-PBS**Synonyms** : H2A.y; H2A/y; mH2A1; H2AF12M; MACROH2A1.1; macroH2A1.2**Application** : WB, IHC-P, ICC/IF**Reactivity** : Human,Mouse,Rat**Host species** : Rabbit**Background**

Histones are basic nuclear proteins that are responsible for the nucleosome structure of the chromosomal fiber in eukaryotes. Nucleosomes consist of approximately 146 bp of DNA wrapped around a histone octamer composed of pairs of each of the four core histones (H2A, H2B, H3, and H4). The chromatin fiber is further compacted through the interaction of a linker histone, H1, with the DNA between the nucleosomes to form higher order chromatin structures. This gene encodes a replication-independent histone that is a member of the histone H2A family. It replaces conventional H2A histones in a subset of nucleosomes where it represses transcription and participates in stable X chromosome inactivation. Alternative splicing results in multiple transcript variants encoding different isoforms. [provided by RefSeq, Oct 2015]

**Immunogen**

A synthetic peptide of human macroH2A.1

**Gene ID**

9555

**Swiss Prot**

O75367

**Synonyms**

H2A.y; H2A/y; mH2A1; H2AF12M; MACROH2A1.1; macroH2A1.2

**Reactivity**

Human,Mouse,Rat

**Application**

WB, IHC-P, ICC/IF

**Recommended dilution**

WB: 1:2000-1:20000

IHC-P: 1:50-1:100

ICC/IF: 1:200-1:500

**Calculated MW**

40 kDa

**Observed MW**

40 kDa

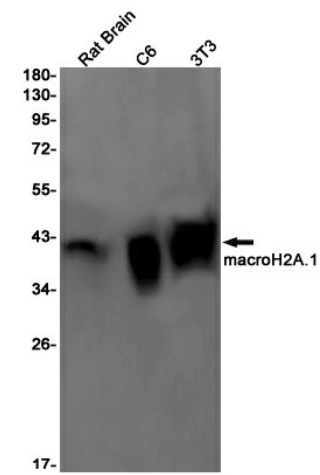
**Host species**

Rabbit

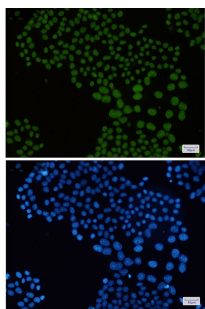
**Clonality**

Monoclonal

Clonality No.	DGR14657
Isotype	IgG
Purity	Affinity Purification
Conjugation	Un-conjugated
Concentration	1 mg/ml
Formulation	PBS Only
Storage Stability	Store at -20°C. Recommended to aliquot into single-use vials. Supplied in 1X PBS (pH 7.4). BSA and Azide Free. Stable for 12 months from date of receipt.



Western blot detection of macroH2A.1 in Rat Brain,C6,3T3 cell lysates using [db11728](#)(1:1000 diluted).



Immunofluorescent analysis of HeLa cells using [db11728](#)