

Recombinant

DGRmAb®

RPS6 (DGR19468) Rabbit mAb (PBS Only)

db11631-PBS

Package : 10µg 100µg

Product Name : RPS6 (DGR19468) Rabbit mAb (PBS Only)**Cat.No.:** db11631-PBS**Synonyms** : S6**Application** : WB, IHC-P, ICC/IF, FC**Reactivity** : Human,Mouse,Rat**Host species** : Rabbit**Background**

Ribosomes, the organelles that catalyze protein synthesis, consist of a small 40S subunit and a large 60S subunit. Together these subunits are composed of 4 RNA species and approximately 80 structurally distinct proteins. This gene encodes a cytoplasmic ribosomal protein that is a component of the 40S subunit. The protein belongs to the S6E family of ribosomal proteins. It is the major substrate of protein kinases in the ribosome, with subsets of five C-terminal serine residues phosphorylated by different protein kinases. Phosphorylation is induced by a wide range of stimuli, including growth factors, tumor-promoting agents, and mitogens. Dephosphorylation occurs at growth arrest. The protein may contribute to the control of cell growth and proliferation through the selective translation of particular classes of mRNA. As is typical for genes encoding ribosomal proteins, there are multiple processed pseudogenes of this gene dispersed through the genome. [provided by RefSeq, Jul 2008]

Immunogen

A synthetic peptide of human RPS6

Gene ID

6194

Swiss Prot

P62753

Synonyms

S6

Reactivity

Human,Mouse,Rat

Application

WB, IHC-P, ICC/IF, FC

Calculated MW

29 kDa

Observed MW

29 kDa

Host species

Rabbit

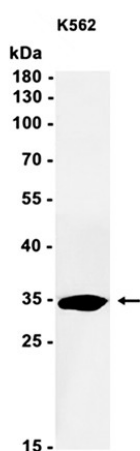
Clonality

Monoclonal

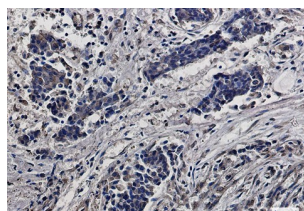
Clonality No.

DGR19468

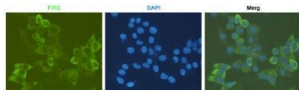
Isotype	IgG
Purity	Affinity Purification
Conjugation	Un-conjugated
Concentration	1 mg/mL
Formulation	PBS Only
Storage Stability	Store at -20°C. Recommended to aliquot into single-use vials. Supplied in 1X PBS (pH 7.4). BSA and Azide Free. Stable for 12 months from date of receipt.



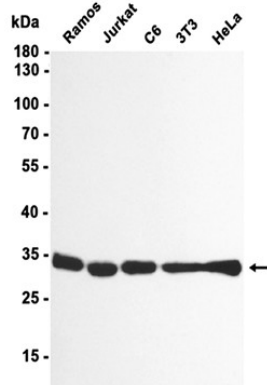
Western blot analysis of extracts from K562 cells using [db11631](#) at 1:1000.



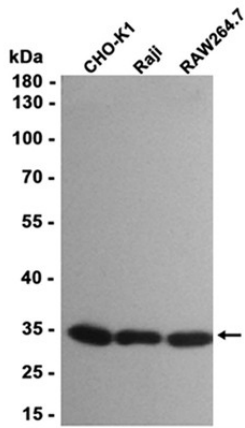
Immunohistochemical analysis of paraffin-embedded human breast cancer using [db11631](#) antibody.



Immunofluorescent analysis of HeLa cells using [db11631](#) antibody (green), and DAPI (blue).



Western blot analysis of extracts from Ramos, Jurkat, C6, 3T3, HeLa cells using [db11631](#) at 1:1000.



Western blot analysis of extracts from CHO-K1, Raji, RAW264.7 cells using [db11631](#) at 1:1000.