

Recombinant

DGRmAb®

CaMKII delta (DGR14460) Rabbit mAb (PBS Only)

db11628-PBS

Package : 100µg

Product Name : CaMKII delta (DGR14460) Rabbit mAb (PBS Only)**Cat.No.:** db11628-PBS**Synonyms :** CAMKD**Application :** WB, IHC-P**Reactivity :** Human,Mouse,Rat**Host species :** Rabbit**Background**

The product of this gene belongs to the serine/threonine protein kinase family and to the Ca(2+)/calmodulin-dependent protein kinase subfamily. Calcium signaling is crucial for several aspects of plasticity at glutamatergic synapses. In mammalian cells, the enzyme is composed of four different chains: alpha, beta, gamma, and delta. The product of this gene is a delta chain. Alternative splicing results in multiple transcript variants encoding distinct isoforms. Distinct isoforms of this chain have different expression patterns.[provided by RefSeq, Nov 2008]

Immunogen

A synthetic peptide of human CaMKII delta

Gene ID

817

Swiss Prot

Q13557

Synonyms

CAMKD

Reactivity

Human,Mouse,Rat

Application

WB, IHC-P

Calculated MW

56 kDa

Observed MW

56 kDa

Host species

Rabbit

Clonality

Monoclonal

Clonality No.

DGR14460

Isotype

IgG

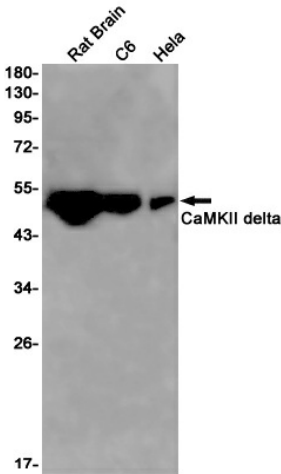
Purity

Affinity Purification

Conjugation

Un-conjugated

Concentration	1 mg/ml
Formulation	PBS Only
Storage Stability	Store at -20°C. Recommended to aliquot into single-use vials. Supplied in 1X PBS (pH 7.4). BSA and Azide Free. Stable for 12 months from date of receipt.



Western blot detection of CaMKII delta in Rat Brain,C6,Hela cell lysates using [db11628](#)(1:1000 diluted).