

Recombinant

DGRmAb®

DOCK2 (DGR12729) Rabbit mAb (PBS Only)

db11341-PBS

Package : 100µg

Product Name : DOCK2 (DGR12729) Rabbit mAb (PBS Only)**Cat.No.:** db11341-PBS**Synonyms :** IMD40**Application :** WB**Reactivity :** Human**Host species :** Rabbit**Background**

The protein encoded by this gene belongs to the CDM protein family. It is specifically expressed in hematopoietic cells and is predominantly expressed in peripheral blood leukocytes. The protein is involved in remodeling of the actin cytoskeleton required for lymphocyte migration in response to chemokine signaling. It activates members of the Rho family of GTPases, for example RAC1 and RAC2, by acting as a guanine nucleotide exchange factor (GEF) to exchange bound GDP for free GTP. [provided by RefSeq, Oct 2016]

Immunogen

A synthetic peptide of human DOCK2

Gene ID

1794

Swiss Prot

Q92608

Synonyms

IMD40

Reactivity

Human

Application

WB

Recommended dilution

WB: 1:1000-1:5000

Calculated MW

212 kDa

Observed MW

212 kDa

Host species

Rabbit

Clonality

Monoclonal

Clonality No.

DGR12729

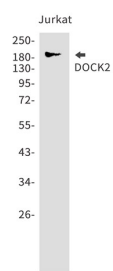
Isotype

IgG

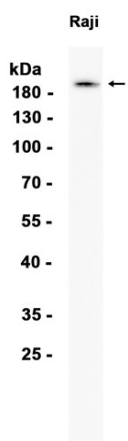
Purity

Affinity Purification

Conjugation	Un-conjugated
Concentration	1 mg/ml
Formulation	PBS Only
Storage Stability	Store at -20°C. Recommended to aliquot into single-use vials. Supplied in 1X PBS (pH 7.4). BSA and Azide Free. Stable for 12 months from date of receipt.



Western blot detection of DOCK2 in Jurkat using [db11341](#).



Western blot analysis of extracts from Raji cells using [db11341](#)