

Recombinant

DGRmAb®

Erlin-2 (DGR35916) Rabbit mAb (PBS Only)

db11311-PBS

Package : 100µg

Product Name : Erlin-2 (DGR35916) Rabbit mAb (PBS Only)**Cat.No.:** db11311-PBS**Synonyms** : NET32; SPFH2; SPG18; C8orf2; Erlin-2**Application** : WB, IHC-P, ICC/IF**Reactivity** : Human,Mouse**Host species** : Rabbit**Background**

This gene encodes a member of the SPFH domain-containing family of lipid raft-associated proteins. The encoded protein is localized to lipid rafts of the endoplasmic reticulum and plays a critical role in inositol 1,4,5-trisphosphate (IP3) signaling by mediating ER-associated degradation of activated IP3 receptors. Mutations in this gene are a cause of spastic paraplegia-18 (SPG18). Alternatively spliced transcript variants encoding multiple isoforms have been observed for this gene. [provided by RefSeq, Feb 2012]

Immunogen

A synthetic peptide of human Erlin-2

Gene ID

11160, 244373

Swiss Prot

O94905, Q8BFZ9

Synonyms

NET32; SPFH2; SPG18; C8orf2; Erlin-2

Reactivity

Human,Mouse

Application

WB, IHC-P, ICC/IF

Recommended dilution

WB: 1:1000-1:5000

IHC-P: 1:50-1:100

ICC/IF: 1:100-1:200

Calculated MW

38 kDa

Observed MW

43 kDa

Host species

Rabbit

Clonality

Monoclonal

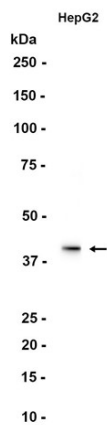
Clonality No.

DGR35916

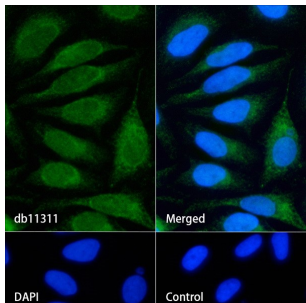
Isotype

IgG

Purity	Affinity Purification
Conjugation	Un-conjugated
Concentration	1 mg/ml
Formulation	PBS Only
Storage Stability	Store at -20°C. Recommended to aliquot into single-use vials. Supplied in 1X PBS (pH 7.4). BSA and Azide Free. Stable for 12 months from date of receipt.



Western blot analysis of extracts from HepG2 cells using db11311 at 1:1000.



Immunofluorescence analysis of HeLa cells labelling Erlin-2 with db11311.

The cells were fixed with 4% PFA (10min, RT) followed by treatment with 0.1% Triton X-100 (10min, RT), and blocked in 1% BSA/10% normal goat serum/0.3M glycine in 0.1% PBS-Tween 20 for 1h. The cells were then incubate with db11311 (1:100) at room temprature for 1h, followed by a further incubation at room temperature for 45min with Goat Anti Rabbit IgG (H+L)-AF488 (db10005, shown in green). Nuclear DNA was labeled in blue with DAPI.

Control: Secondary antibody only.