

Recombinant

DGRmAb®

GABARAPL2 (DGR20959) Rabbit mAb (PBS Only)

db11278-PBS

Package : 100µg

Product Name : GABARAPL2 (DGR20959) Rabbit mAb (PBS Only)**Cat.No.:** db11278-PBS**Synonyms :** ATG8; GEF2; ATG8C; GEF-2; GATE16; GATE-16**Application :** WB**Reactivity :** Human,Mouse,Rat**Host species :** Rabbit**Background**

Ubiquitin-like modifier involved in intra-Golgi traffic. Modulates intra-Golgi transport through coupling between NSF activity and SNAREs activation. It first stimulates the ATPase activity of NSF which in turn stimulates the association with GOSR1 (By similarity). Involved in autophagy. Plays a role in mitophagy which contributes to regulate mitochondrial quantity and quality by eliminating the mitochondria to a basal level to fulfill cellular energy requirements and preventing excess ROS production. Whereas LC3s are involved in elongation of the phagophore membrane, the GABARAP/GATE-16 subfamily is essential for a later stage in autophagosome maturation.

Immunogen

A synthetic peptide of human GABARAPL2

Gene ID

11345

Swiss Prot

P60520

Synonyms

ATG8; GEF2; ATG8C; GEF-2; GATE16; GATE-16

Reactivity

Human,Mouse,Rat

Application

WB

Recommended dilution

WB: 1:1000-1:5000

Calculated MW

14 kDa

Observed MW

14 kDa

Host species

Rabbit

Clonality

Monoclonal

Clonality No.

DGR20959

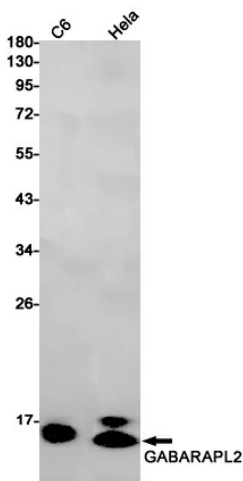
Isotype

IgG

Purity

Affinity Purification

Conjugation	Un-conjugated
Concentration	1 mg/ml
Formulation	PBS Only
Storage Stability	Store at -20°C. Recommended to aliquot into single-use vials. Supplied in 1X PBS (pH 7.4). BSA and Azide Free. Stable for 12 months from date of receipt.



Western blot detection of GABARAPL2 in C6,HeLa cell lysates using [db11278](#)(1:1000 diluted).