

Recombinant

DGRmAb®

Annexin A2 (DGR19811) Rabbit mAb (PBS Only)

db11251-PBS

Package : 100µg

Product Name : Annexin A2 (DGR19811) Rabbit mAb (PBS Only)**Cat.No.:** db11251-PBS**Synonyms** : P36; ANX2; LIP2; LPC2; CAL1H; LPC2D; ANX2L4; PAP-IV; HEL-S-270**Application** : WB, IHC-P, ICC/IF, FC**Reactivity** : Human,Mouse,Rat**Host species** : Rabbit**Background**

This gene encodes a member of the annexin family. Members of this calcium-dependent phospholipid-binding protein family play a role in the regulation of cellular growth and in signal transduction pathways. This protein functions as an autocrine factor which heightens osteoclast formation and bone resorption. This gene has three pseudogenes located on chromosomes 4, 9 and 10, respectively. Multiple alternatively spliced transcript variants encoding different isoforms have been found for this gene. [provided by RefSeq, Jul 2008]

Immunogen

A synthetic peptide of human Annexin A2

Gene ID

302

Swiss Prot

P07355

Synonyms

P36; ANX2; LIP2; LPC2; CAL1H; LPC2D; ANX2L4; PAP-IV; HEL-S-270

Reactivity

Human,Mouse,Rat

Application

WB, IHC-P, ICC/IF, FC

Recommended dilution

WB: 1:1000-1:10000

IHC-P: 1:50-1:100

ICC/IF: 1:100-1:200

FC: 1:10-1:100

Calculated MW

39 kDa

Observed MW

38 kDa

Host species

Rabbit

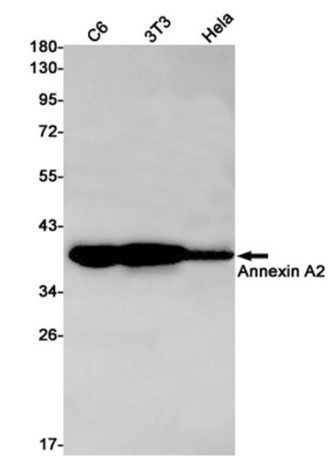
Clonality

Monoclonal

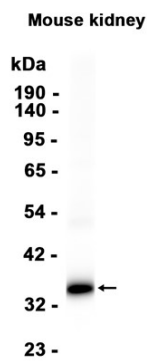
Clonality No.

DGR19811

Isotype	IgG
Purity	Affinity Purification
Conjugation	Un-conjugated
Concentration	1 mg/ml
Formulation	PBS Only
Storage Stability	Store at -20°C. Recommended to aliquot into single-use vials. Supplied in 1X PBS (pH 7.4). BSA and Azide Free. Stable for 12 months from date of receipt.



Western blot detection of Annexin A2 in C6,3T3,HeLa cell lysates using [db11251](#) (1:1000 diluted).



Western blot analysis of extracts from Mouse kidney tissue using [db11251](#)