

Recombinant

DGRmAb®

ASH2L (DGR19470) Rabbit mAb (PBS Only)

db11227-PBS

Package : 100µg

Product Name : ASH2L (DGR19470) Rabbit mAb (PBS Only)**Cat.No.:** db11227-PBS**Synonyms** : ASH2; Bre2; ASH2L1; ASH2L2**Application** : WB, IHC-P, ICC/IF, FC**Reactivity** : Human,Mouse,Rat**Host species** : Rabbit**Background**

Component of the Set1/Ash2 histone methyltransferase (HMT) complex, a complex that specifically methylates 'Lys-4' of histone H3, but not if the neighboring 'Lys-9' residue is already methylated. As part of the MLL1/MLL complex it is involved in methylation and dimethylation at 'Lys-4' of histone H3. May function as a transcriptional regulator. May play a role in hematopoiesis.

Immunogen

A synthetic peptide of human ASH2L

Gene ID

9070

Swiss Prot

Q9UBL3

Synonyms

ASH2; Bre2; ASH2L1; ASH2L2

Reactivity

Human,Mouse,Rat

Application

WB, IHC-P, ICC/IF, FC

Recommended dilution

WB: 1:2000-1:20000

IHC-P: 1:50-1:100

ICC/IF: 1:100-1:200

FC: 1:200-1:1000

Calculated MW

69 kDa

Observed MW

80 kDa

Host species

Rabbit

Clonality

Monoclonal

Clonality No.

DGR19470

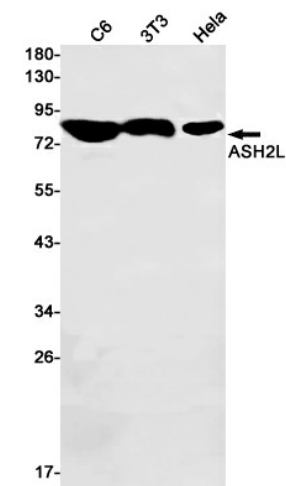
Isotype

IgG

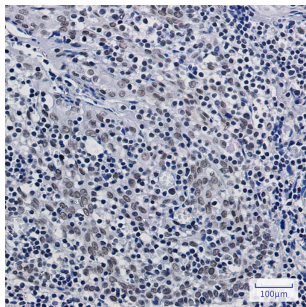
Purity

Affinity Purification

Conjugation	Un-conjugated
Concentration	1 mg/ml
Formulation	PBS Only
Storage Stability	Store at -20°C. Recommended to aliquot into single-use vials. Supplied in 1X PBS (pH 7.4). BSA and Azide Free. Stable for 12 months from date of receipt.



Western blot detection of ASH2L in C6,3T3,HeLa cell lysates using [db11227](#)(1:1000 diluted).



Immunohistochemical analysis of paraffin-embedded human tonsil using [db11227](#)