

Recombinant

DGRmAb®

NXF1 (DGR20546) Rabbit mAb (PBS Only)

db11216-PBS

Package : 100µg

Product Name : NXF1 (DGR20546) Rabbit mAb (PBS Only)**Cat.No.:** db11216-PBS**Synonyms** : TAP; MEX67**Application** : WB, ICC/IF, FC, IP**Reactivity** : Human**Host species** : Rabbit**Background**

This gene is one member of a family of nuclear RNA export factor genes. Common domain features of this family are a noncanonical RNP-type RNA-binding domain (RBD), 4 leucine-rich repeats (LRRs), a nuclear transport factor 2 (NTF2)-like domain that allows heterodimerization with NTF2-related export protein-1 (NXT1), and a ubiquitin-associated domain that mediates interactions with nucleoporins. The LRRs and NTF2-like domains are required for export activity. Alternative splicing seems to be a common mechanism in this gene family. The encoded protein of this gene shuttles between the nucleus and the cytoplasm and binds in vivo to poly(A)⁺ RNA. It is the vertebrate homologue of the yeast protein Mex67p. The encoded protein overcomes the mRNA export block caused by the presence of saturating amounts of CTE (constitutive transport element) RNA of type D retroviruses. Alternative splicing results in multiple transcript variants. [provided by RefSeq, Jul 2008]

Immunogen

A synthetic peptide of human NXF1

Gene ID

10482

Swiss Prot

Q9UBU9

Synonyms

TAP; MEX67

Reactivity

Human

Application

WB, ICC/IF, FC, IP

Recommended dilution

WB: 1:1000-1:5000

ICC/IF: 1:200-1:500

FC: 1:20-1:50

IP: 1:10-1:100

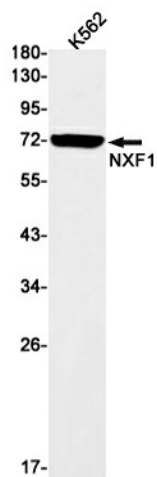
Calculated MW

70 kDa

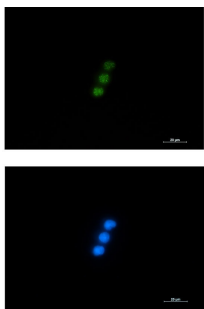
Observed MW

70 kDa

Host species	Rabbit
Clonality	Monoclonal
Clonality No.	DGR20546
Isotype	IgG
Purity	Affinity Purification
Conjugation	Un-conjugated
Concentration	1 mg/ml
Formulation	PBS Only
Storage Stability	Store at -20°C. Recommended to aliquot into single-use vials. Supplied in 1X PBS (pH 7.4). BSA and Azide Free. Stable for 12 months from date of receipt.



Western blot detection of NXF1 in K562 cell lysates using [db11216](#)(1:1000 diluted).



Immunofluorescent analysis of Jurkat cells using [db11216](#)