

Recombinant

DGRmAb®

CD166 (DGR13056) Rabbit mAb (PBS Only)

db11186-PBS

Package : 10µg 100µg

Product Name : CD166 (DGR13056) Rabbit mAb (PBS Only)**Cat.No.:** db11186-PBS**Synonyms** : MEMD; CD166**Application** : WB, IHC-P, ICC/IF, FC, IP**Reactivity** : Human,Mouse,Rat**Host species** : Rabbit**Background**

This gene encodes activated leukocyte cell adhesion molecule (ALCAM), also known as CD166 (cluster of differentiation 166), which is a member of a subfamily of immunoglobulin receptors with five immunoglobulin-like domains (VVC2C2C2) in the extracellular domain. This protein binds to T-cell differentiation antigen CD6, and is implicated in the processes of cell adhesion and migration. Multiple alternatively spliced transcript variants encoding different isoforms have been found. [provided by RefSeq, Aug 2011]

Immunogen

A synthetic peptide of human CD166

Gene ID

214

Swiss Prot

Q13740

Synonyms

MEMD; CD166

Reactivity

Human,Mouse,Rat

Application

WB, IHC-P, ICC/IF, FC, IP

Calculated MW

65 kDa

Observed MW

105 kDa

Host species

Rabbit

Clonality

Monoclonal

Clonality No.

DGR13056

Isotype

IgG

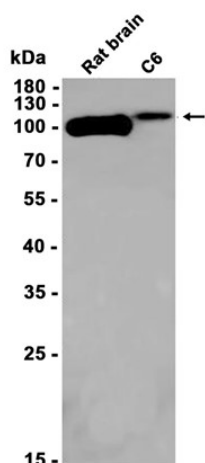
Purity

Affinity Purification

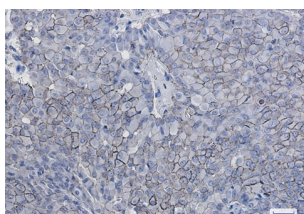
Conjugation

Un-conjugated

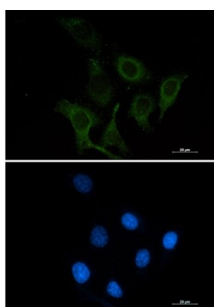
Concentration	1 mg/mL
Formulation	PBS Only
Storage Stability	Store at -20°C. Recommended to aliquot into single-use vials. Supplied in 1X PBS (pH 7.4). BSA and Azide Free. Stable for 12 months from date of receipt.



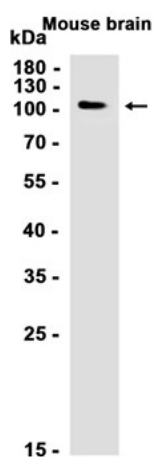
Western blot analysis of extracts from C6 cells and Rat brain tissue using [db11186](#) at 1:1000.



Immunohistochemical analysis of paraffin-embedded human breast cancer using [db11186](#) antibody.



Immunofluorescent analysis of SKOV-3 cells using [db11186](#) antibody (green), and DAPI (blue).



Western blot analysis of extracts from Mouse brain tissue using [db11186](#) at 1:1000.