

Recombinant

DGRmAb®

**Doublecortin (DGR11323) Rabbit mAb (PBS Only)**

db11118-PBS

Package : 10µg 100µg

**Product Name** : Doublecortin (DGR11323) Rabbit mAb (PBS Only)**Cat.No.:** db11118-PBS**Synonyms** : DC; DBCN; LISX; SCLH; XLIS**Application** : WB, IHC-P, ICC/IF**Reactivity** : Human,Mouse,Rat**Host species** : Rabbit**Background**

This gene encodes a member of the doublecortin family. The protein encoded by this gene is a cytoplasmic protein and contains two doublecortin domains, which bind microtubules. In the developing cortex, cortical neurons must migrate over long distances to reach the site of their final differentiation. The encoded protein appears to direct neuronal migration by regulating the organization and stability of microtubules. In addition, the encoded protein interacts with LIS1, the regulatory gamma subunit of platelet activating factor acetylhydrolase, and this interaction is important to proper microtubule function in the developing cortex. Mutations in this gene cause abnormal migration of neurons during development and disrupt the layering of the cortex, leading to epilepsy, cognitive disability, subcortical band heterotopia ("double cortex" syndrome) in females and lissencephaly ("smooth brain" syndrome) in males. Multiple transcript variants encoding different isoforms have been found for this gene. [provided by RefSeq, Sep 2010]

**Immunogen**

Recombinant protein of human Doublecortin

**Gene ID**

1641

**Swiss Prot**

O43602

**Synonyms**

DC; DBCN; LISX; SCLH; XLIS

**Reactivity**

Human,Mouse,Rat

**Application**

WB, IHC-P, ICC/IF

**Calculated MW**

41 kDa

**Observed MW**

41 kDa

**Host species**

Rabbit

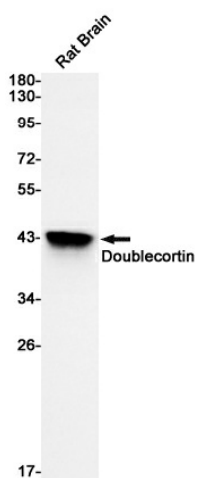
**Clonality**

Monoclonal

**Clonality No.**

DGR11323

<b>Isotype</b>	IgG
<b>Purity</b>	Affinity Purification
<b>Conjugation</b>	Un-conjugated
<b>Concentration</b>	1 mg/mL
<b>Formulation</b>	PBS Only
<b>Storage Stability</b>	Store at -20°C. Recommended to aliquot into single-use vials. Supplied in 1X PBS (pH 7.4). BSA and Azide Free. Stable for 12 months from date of receipt.



Western blot detection of Doublecortin in Rat Brain cell using Doublecortin antibody(1:1000 diluted).