

Recombinant

DGRmAb®

Keap1 (DGR20804) Rabbit mAb (PBS Only)

db11088-PBS

Package : 10µg 100µg

Product Name : Keap1 (DGR20804) Rabbit mAb (PBS Only)**Cat.No.:** db11088-PBS**Synonyms** : INrf2; KLHL19**Application** : WB, IHC-P**Reactivity** : Human,Mouse**Host species** : Rabbit**Background**

This gene encodes a protein containing KELCH-1 like domains, as well as a BTB/POZ domain. Kelch-like ECH-associated protein 1 interacts with NF-E2-related factor 2 in a redox-sensitive manner and the dissociation of the proteins in the cytoplasm is followed by transportation of NF-E2-related factor 2 to the nucleus. This interaction results in the expression of the catalytic subunit of gamma-glutamylcysteine synthetase. Two alternatively spliced transcript variants encoding the same isoform have been found for this gene. [provided by RefSeq, Jul 2008]

Immunogen

Recombinant protein of human Keap1

Gene ID

9817

Swiss Prot

Q14145

Synonyms

INrf2; KLHL19

Reactivity

Human,Mouse

Application

WB, IHC-P

Calculated MW

70 kDa

Observed MW

60-64 kDa

Host species

Rabbit

Clonality

Monoclonal

Clonality No.

DGR20804

Isotype

IgG

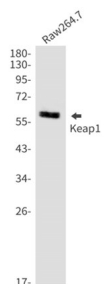
Purity

Affinity Purification

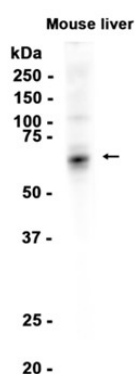
Conjugation

Un-conjugated

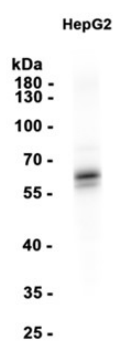
Concentration	1 mg/mL
Formulation	PBS Only
Storage Stability	Store at -20°C. Recommended to aliquot into single-use vials. Supplied in 1X PBS (pH 7.4). BSA and Azide Free. Stable for 12 months from date of receipt.



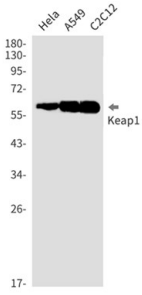
Western blot detection of Keap1 in Raw264.7 cell lysates using Keap1 antibody(1:1000 diluted).



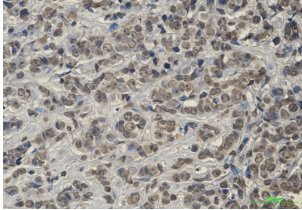
Western blot analysis of extracts from Mouse liver tissue using [db11088](#) at 1:1000.



Western blot analysis of extracts from HepG2 cells using [db11088](#) at 1:1000.



Western blot detection of Keap1 in HeLa, A549, C2C12 cell lysates using Keap1 antibody(1:1000 diluted).



Immunohistochemical analysis of paraffin-embedded human breast cancer using db11088 antibody.