

Recombinant

DGRmAb®

## Syntenin (DGR15736) Rabbit mAb (PBS Only)

db15001-PBS

Package : 10µg 100µg

**Product Name** : Syntenin (DGR15736) Rabbit mAb (PBS Only)**Cat.No.:** db15001-PBS**Synonyms** : ST1; MDA9; SYCL; MDA-9; TACIP18**Application** : WB, IHC-P, ICC/IF, FC, IP**Reactivity** : Human**Host species** : Rabbit**Background**

The protein encoded by this gene was initially identified as a molecule linking syndecan-mediated signaling to the cytoskeleton. The syntenin protein contains tandemly repeated PDZ domains that bind the cytoplasmic, C-terminal domains of a variety of transmembrane proteins. This protein may also affect cytoskeletal-membrane organization, cell adhesion, protein trafficking, and the activation of transcription factors. The protein is primarily localized to membrane-associated adherens junctions and focal adhesions but is also found at the endoplasmic reticulum and nucleus. Alternative splicing results in multiple transcript variants encoding different isoforms. Related pseudogenes have been identified on multiple chromosomes. [provided by RefSeq, Jan 2017]

**Immunogen**

A synthetic peptide of human Syntenin

**Gene ID**

6386

**Swiss Prot**

O00560

**Synonyms**

ST1; MDA9; SYCL; MDA-9; TACIP18

**Reactivity**

Human

**Application**

WB, IHC-P, ICC/IF, FC, IP

**Calculated MW**

32 kDa

**Observed MW**

32 kDa

**Host species**

Rabbit

**Clonality**

Monoclonal

**Clonality No.**

DGR15736

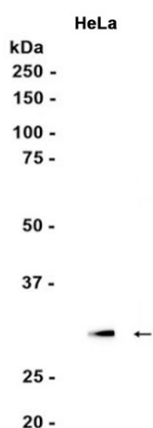
**Isotype**

IgG

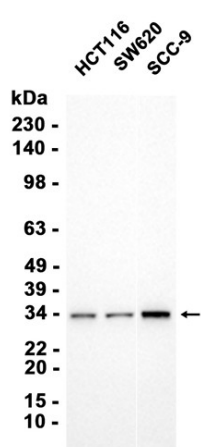
**Purity**

Affinity Purification

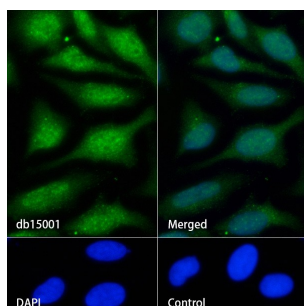
<b>Conjugation</b>	Un-conjugated
<b>Concentration</b>	1 mg/mL
<b>Formulation</b>	PBS Only
<b>Storage Stability</b>	Store at -20°C. Recommended to aliquot into single-use vials. Supplied in 1X PBS (pH 7.4). BSA and Azide Free. Stable for 12 months from date of receipt.



Western blot analysis of extracts from HeLa cells using [db15001](#) at 1:1000.



Western blot analysis of extracts from HCT116, SW620, SCC-9 cells using [db15001](#) at 1:3000.



Immunofluorescence analysis of HeLa cells labelling Syntenin with [db15001](#).

The cells were fixed with cold 100% methanol (10min, 4°C) and blocked in 1% BSA/10% normal goat serum/0.3M glycine in 0.1% PBS-Tween 20 for 1h. The cells were then incubate with [db15001](#) (1:50) at room temperature for 1h, followed by a further incubation at room temperature for 45min with Goat Anti Rabbit IgG (H+L)-AF488 ([db10005](#), shown in green). Nuclear DNA was labeled in blue with DAPI.

Control: Secondary antibody only.

