

Recombinant

DGRmAb®

CD14 (DGR15445) Rabbit mAb (PBS Only)

db15053-PBS

Package : 100µg

Product Name : CD14 (DGR15445) Rabbit mAb (PBS Only)**Cat.No.:** db15053-PBS**Synonyms :** Myeloid cell-specific leucine-rich glycoprotein**Application :** WB, ICC/IF, FC, IP**Reactivity :** Mouse**Host species :** Rabbit**Background**

This gene encodes a protein that plays an important role in the innate immune response and is expressed in monocyte/macrophage cells. This gene product acts as a co-receptor that binds several microbial and fungal molecules, including lipopolysaccharides (LPS). This proteins LPS-binding activity is enhanced by the LPS binding protein (LBP) to allow binding to the TLR4-MD-2 co-receptor complex. The product of this gene is found in two forms, either as a soluble protein or attached to the cell surface by a glycosylphosphatidylinositol anchor. [provided by RefSeq, Jul 2014]

Immunogen

Recombinant protein of mouse CD14

Gene ID

12475

Swiss Prot

P10810

Synonyms

Myeloid cell-specific leucine-rich glycoprotein

Reactivity

Mouse

Application

WB, ICC/IF, FC, IP

Recommended dilution

WB: 1:1000

ICC/IF: 1:500-1:1000

FC: 1:200-1:500

IP: 1:20-1:50

Calculated MW

39 kDa

Observed MW

45-52 kDa

Host species

Rabbit

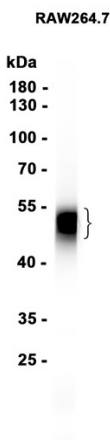
Clonality

Monoclonal

Clonality No.

DGR15445

Isotype	IgG
Purity	Affinity Purification
Conjugation	Un-conjugated
Concentration	1 mg/ml
Formulation	PBS Only
Storage Stability	Store at -20°C. Recommended to aliquot into single-use vials. Supplied in 1X PBS (pH 7.4). BSA and Azide Free. Stable for 12 months from date of receipt.



Western blot analysis of extracts from RAW264.7 cells using [db15053](#)