

Recombinant

DGRmAb®

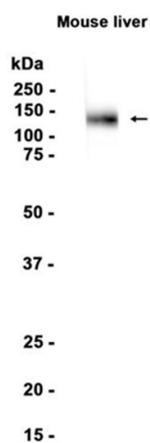
LAMP1 (DGR15502) Rabbit mAb (PBS Only)

db15048-PBS

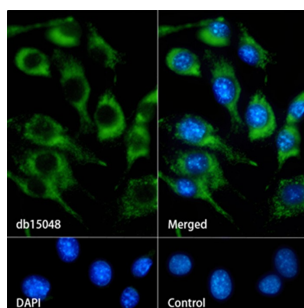
Package : 10µg 100µg

Product Name : LAMP1 (DGR15502) Rabbit mAb (PBS Only)**Cat.No.:** db15048-PBS**Synonyms** : P2B; Perk; LGP-A; CD107a; Lamp-1; LGP-120**Application** : WB, IHC-P, ICC/IF, FC, IP**Reactivity** : Mouse**Host species** : Rabbit

Background	Presents carbohydrate ligands to selectins. Also implicated in tumor cell metastasis.
Immunogen	Recombinant protein of mouse LAMP1
Gene ID	16783
Swiss Prot	P11438
Synonyms	P2B; Perk; LGP-A; CD107a; Lamp-1; LGP-120
Reactivity	Mouse
Application	WB, IHC-P, ICC/IF, FC, IP
Calculated MW	44 kDa
Observed MW	90-120 kDa
Host species	Rabbit
Clonality	Monoclonal
Clonality No.	DGR15502
Isotype	IgG
Purity	Affinity Purification
Conjugation	Un-conjugated
Concentration	1 mg/mL
Formulation	PBS Only
Storage Stability	Store at -20°C. Recommended to aliquot into single-use vials. Supplied in 1X PBS (pH 7.4). BSA and Azide Free. Stable for 12 months from date of receipt.



Western blot analysis of extracts from Mouse liver tissue using [db15048](#) at 1:1000.



Immunofluorescence analysis of 3T3 cells labelling LAMP1 with [db15048](#).

The cells were fixed with cold 100% methanol (10min, 4°C) and blocked in 1% BSA/10% normal goat serum/0.3M glycine in 0.1% PBS-Tween 20 for 1h. The cells were then incubate with [db15048](#) (1:100) at room temprature for 1h, followed by a further incubation at room temperature for 45min with Goat Anti Rabbit IgG (H+L)-AF488 [db10005](#), shown in green). Nuclear DNA was labeled in blue with DAPI.

Control: Secondary antibody only.