

Recombinant

DGRmAb®

Actin (DGR13070) Rabbit mAb (AF647)

db11112-DL647

Package : 100µL

Product Name : Actin (DGR13070) Rabbit mAb (AF647)**Cat.No.:** db11112-DL647**Synonyms** : ACTA; ASMA; CFTD; MPFD; NEM1; NEM2; NEM3; SHPM; CFTD1; CFTDM**Application** : ICC/IF, FC**Reactivity** : Human, Mouse, Rat**Host species** : Rabbit**Background**

The product encoded by this gene belongs to the actin family of proteins, which are highly conserved proteins that play a role in cell motility, structure and integrity. Alpha, beta and gamma actin isoforms have been identified, with alpha actins being a major constituent of the contractile apparatus, while beta and gamma actins are involved in the regulation of cell motility. This actin is an alpha actin that is found in skeletal muscle. Mutations in this gene cause nemaline myopathy type 3, congenital myopathy with excess of thin myofilaments, congenital myopathy with cores, and congenital myopathy with fiber-type disproportion, diseases that lead to muscle fiber defects. [provided by RefSeq, Jul 2008]

Immunogen

A synthetic peptide of human Actin

Gene ID

58

Swiss Prot

P68133

Synonyms

ACTA; ASMA; CFTD; MPFD; NEM1; NEM2; NEM3; SHPM; CFTD1; CFTDM

Reactivity

Human, Mouse, Rat

Application

ICC/IF, FC

Recommended dilution

ICC/IF: 1:200

Calculated MW

42 kDa

Host species

Rabbit

Clonality

Monoclonal

Clonality No.

DGR13070

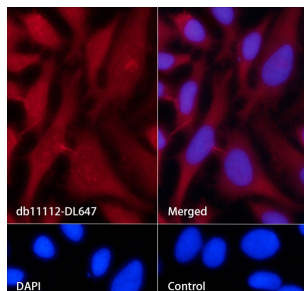
Isotype

IgG

Purity

Affinity Purification

Conjugation	AF647
Concentration	1 mg/mL
Storage Stability	Store at -20°C. Avoid exposure to light. Supplied in PBS with 50% glycerol, 0.05% Proclin300, 0.5% BSA, pH 7.3. Stable for 12 months from date of receipt.



Immunofluorescence analysis of HeLa cells labelling Actin with db11112-DL647.

The cells were fixed with cold 100% methanol (10min, 4°C) and blocked in 1% BSA/10% normal goat serum/0.3M glycine in 0.1% PBS-Tween 20 for 1h. The cells were then incubate with db11112-DL647 (1:200, shown in red) at room temperature for 1h. Nuclear DNA was labeled in blue with DAPI.

Control: DAPI only.