

Recombinant

DGRmAb®

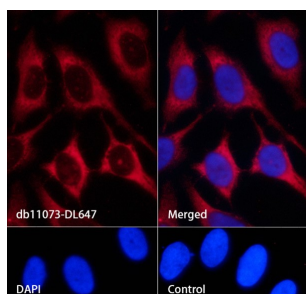
beta Tubulin (DGR11132) Rabbit mAb (AF647)

db11073-DL647

Package : 100µL

Product Name : beta Tubulin (DGR11132) Rabbit mAb (AF647)**Cat.No.:** db11073-DL647**Synonyms** : CDCBM7; PMGYSA; bA506K6.1**Application** : IHC-P, ICC/IF, FC**Reactivity** : Human, Mouse, Rat**Host species** : Rabbit

| | |
|-----------------------------|--|
| Background | The protein encoded by this gene is a beta isoform of tubulin, which binds GTP and is a major component of microtubules. This gene is highly similar to TUBB2A and TUBB2C. Defects in this gene are a cause of asymmetric polymicrogyria. [provided by RefSeq, Mar 2010] |
| Immunogen | A synthetic peptide of human beta Tubulin |
| Gene ID | 347733 |
| Swiss Prot | Q9BVA1 |
| Synonyms | CDCBM7; PMGYSA; bA506K6.1 |
| Reactivity | Human, Mouse, Rat |
| Application | IHC-P, ICC/IF, FC |
| Recommended dilution | ICC/IF: 1:200 |
| Calculated MW | 50 kDa |
| Host species | Rabbit |
| Clonality | Monoclonal |
| Clonality No. | DGR11132 |
| Isotype | IgG |
| Purity | Affinity Purification |
| Conjugation | AF647 |
| Concentration | 1 mg/mL |
| Storage Stability | Store at -20°C. Avoid exposure to light. Supplied in PBS with 50% glycerol, 0.05% Proclin300, 0.5% BSA, pH 7.3. Stable for 12 months from date of receipt. |



Immunofluorescence analysis of HeLa cells labelling beta Tubulin with db11073-DL647.

The cells were fixed with cold 100% methanol (10min, 4°C) and blocked in 1% BSA/10% normal goat serum/0.3M glycine in 0.1% PBS-Tween 20 for 1h. The cells were then incubate with db11073-DL647 (1:200, shown in red) at room temperature for 1h. Nuclear DNA was labeled in blue with DAPI.

Control: DAPI only.