

Recombinant

DGRmAb®

KLK8 (DGR36148) Rabbit mAb

db16383

Package : 10µL 20µL 50µL 100µL

Product Name : KLK8 (DGR36148) Rabbit mAb**Cat.No.:** db16383**Synonyms** : NP; HNP; NRPN; PRSS19; TADG14**Application** : WB, IHC-P**Reactivity** : Human**Host species** : Rabbit**Background**

Kallikreins are a subgroup of serine proteases having diverse physiological functions. Growing evidence suggests that many kallikreins are implicated in carcinogenesis and some have potential as novel cancer and other disease biomarkers. This gene is one of the fifteen kallikrein subfamily members located in tandem in a gene cluster on chromosome 19. The encoded protein may be involved in proteolytic cascade in the skin and may serve as a biomarker for ovarian cancer. Alternate splicing of this gene results in multiple transcript variants encoding different isoforms. [provided by RefSeq, Jul 2013]

Immunogen

A synthetic peptide of Human KLK8

Gene ID

11202

Swiss Prot

O60259

Synonyms

NP; HNP; NRPN; PRSS19; TADG14

Reactivity

Human

Application

WB, IHC-P

Recommended dilution

WB: 1:1000-1:1000

IHC-P: 1:50-1:100

Calculated MW

28, 33 kDa

Observed MW

36 kDa

Host species

Rabbit

Clonality

Monoclonal

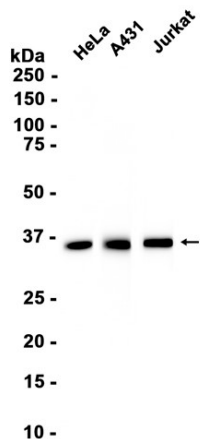
Clonality No.

DGR36148

Isotype

IgG

Purity	Affinity Purification
Conjugation	Un-conjugated
Storage Stability	Store at -20°C. Supplied in 50mM Tris-Glycine(pH 7.4), 0.15M NaCl, 40% Glycerol, 0.01% sodium azide and 0.05% BSA. Stable for 12 months from date of receipt.



Western blot analysis of extracts from HeLa, A431, Jurkat cells using db16383 at 1:1000.