

Recombinant

DGRmAb®

**ABRAXAS1 (DGR36053) Rabbit mAb**

db16288

Package : 10µL 20µL 50µL 100µL

**Product Name** : ABRAXAS1 (DGR36053) Rabbit mAb**Cat.No.:** db16288**Synonyms** : ABRA1; CCDC98; FAM175A**Application** : WB, ICC/IF, FC, IP**Reactivity** : Human**Host species** : Rabbit**Background**

This gene encodes a protein that binds to the C-terminal repeats of breast cancer 1 (BRCA1) through a phospho-SXXF motif. The encoded protein recruits ubiquitin interaction motif containing 1 protein to BRCA1 protein and is required for DNA damage resistance, DNA repair, and cell cycle checkpoint control. Pseudogenes of this gene are found on chromosomes 3 and 8. Alternative splicing results in multiple transcript variants. [provided by RefSeq, Sep 2016]

**Immunogen**

A synthetic peptide of Human ABRAXAS1

**Gene ID**

84142

**Swiss Prot**

Q6UWZ7

**Synonyms**

ABRA1; CCDC98; FAM175A

**Reactivity**

Human

**Application**

WB, ICC/IF, FC, IP

**Recommended dilution**

WB: 1:1000-1:10000

ICC/IF: 1:200-1:500

FC: 1:200-1:1000

IP: 1:20-1:200

**Calculated MW**

47 kDa

**Observed MW**

50 kDa

**Host species**

Rabbit

**Clonality**

Monoclonal

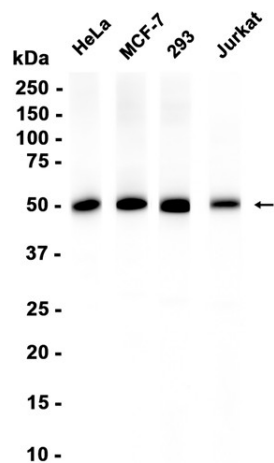
**Clonality No.**

DGR36053

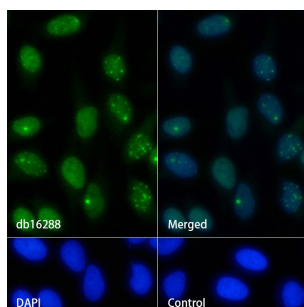
**Isotype**

IgG

<b>Purity</b>	Affinity Purification
<b>Conjugation</b>	Un-conjugated
<b>Storage Stability</b>	Store at -20°C. Supplied in 50mM Tris-Glycine(pH 7.4), 0.15M NaCl, 40% Glycerol, 0.01% sodium azide and 0.05% BSA. Stable for 12 months from date of receipt.



Western blot analysis of extracts from HeLa, MCF-7, 293, Jurkat cells using db16288 at 1:1000.



Immunofluorescence analysis of HeLa cells labelling ABRAXAS1 with db16288.

The cells were fixed with 4% PFA (10min, RT) followed by treatment with 0.1% Triton X-100 (10min, RT), and blocked in 1% BSA/10% normal goat serum/0.3M glycine in 0.1% PBS-Tween 20 for 1h. The cells were then incubate with db16288 (1:200) at room temperature for 1h, followed by a further incubation at room temperature for 45min with Goat Anti Rabbit IgG (H+L)-AF488 (db10005, shown in green). Nuclear DNA was labeled in blue with DAPI.

Control: Secondary antibody only.