

Recombinant

DGRmAb®

## Flotillin 1 (DGR14658) Rabbit mAb (PBS Only)

db11731-PBS

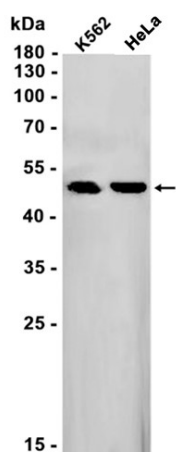
Package : 10µg 100µg

**Product Name** : Flotillin 1 (DGR14658) Rabbit mAb (PBS Only)**Cat.No.:** db11731-PBS**Synonyms** : FLOT1**Application** : WB, IHC-P, ICC/IF, FC, IP**Reactivity** : Human,Mouse,Rat**Host species** : Rabbit

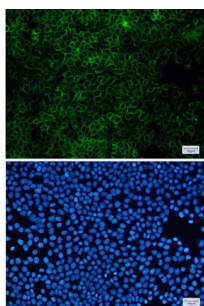
<b>Background</b>	This gene encodes an protein that localizes to the caveolae, which are small domains on the inner cell membranes. This protein plays a role in vesicle trafficking and cell morphology. Alternative splicing results in multiple transcript variants. [provided by RefSeq, Jan 2016]
<b>Immunogen</b>	A synthetic peptide of human Flotillin 1
<b>Gene ID</b>	10211
<b>Swiss Prot</b>	O75955
<b>Synonyms</b>	FLOT1
<b>Reactivity</b>	Human,Mouse,Rat
<b>Application</b>	WB, IHC-P, ICC/IF, FC, IP
<b>Calculated MW</b>	47 kDa
<b>Observed MW</b>	49 kDa
<b>Host species</b>	Rabbit
<b>Clonality</b>	Monoclonal
<b>Clonality No.</b>	DGR14658
<b>Isotype</b>	IgG
<b>Purity</b>	Affinity Purification
<b>Conjugation</b>	Un-conjugated
<b>Concentration</b>	1 mg/mL
<b>Formulation</b>	PBS Only

**Storage Stability**

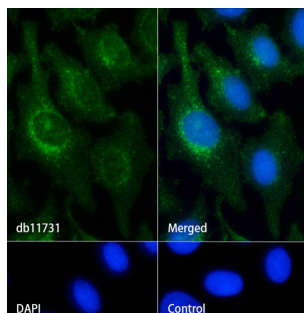
Store at -20°C. Recommended to aliquot into single-use vials. Supplied in 1X PBS (pH 7.4). BSA and Azide Free. Stable for 12 months from date of receipt.



Western blot analysis of extracts from K562, HeLa cells using [db11731](#) at 1:1000.



Immunofluorescent analysis of HeLa cells using [db11731](#) antibody (green), and DAPI (blue).



Immunofluorescence analysis of HeLa cells labelling Flotillin 1 with [db11731](#).

The cells were fixed with cold 100% methanol (10min, 4°C) and blocked in 1% BSA/10% normal goat serum/0.3M glycine in 0.1% PBS-Tween 20 for 1h. The cells were then incubate with [db11731](#) (1:200) at room temperature for 1h, followed by a further incubation at room temperature for 45min with Goat Anti Rabbit IgG (H+L)-AF488 [db10005](#), shown in green). Nuclear DNA was labeled in blue with DAPI.

Control: Secondary antibody only.