

Recombinant

DGRmAb®

KLK8 (DGR36148) Rabbit mAb (PBS Only)

db16383-PBS

Package : 10µg 100µg

Product Name : KLK8 (DGR36148) Rabbit mAb (PBS Only)**Cat.No.:** db16383-PBS**Synonyms** : NP; HNP; NRPN; PRSS19; TADG14**Application** : WB, IHC-P**Reactivity** : Human**Host species** : Rabbit**Background**

Kallikreins are a subgroup of serine proteases having diverse physiological functions. Growing evidence suggests that many kallikreins are implicated in carcinogenesis and some have potential as novel cancer and other disease biomarkers. This gene is one of the fifteen kallikrein subfamily members located in tandem in a gene cluster on chromosome 19. The encoded protein may be involved in proteolytic cascade in the skin and may serve as a biomarker for ovarian cancer. Alternate splicing of this gene results in multiple transcript variants encoding different isoforms. [provided by RefSeq, Jul 2013]

Immunogen

A synthetic peptide of Human KLK8

Gene ID

11202

Swiss Prot

O60259

Synonyms

NP; HNP; NRPN; PRSS19; TADG14

Reactivity

Human

Application

WB, IHC-P

Calculated MW

28, 33 kDa

Observed MW

36 kDa

Host species

Rabbit

Clonality

Monoclonal

Clonality No.

DGR36148

Isotype

IgG

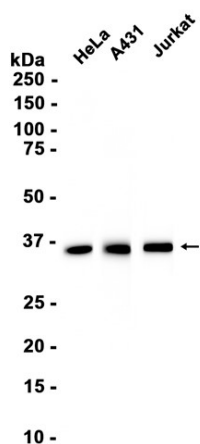
Purity

Affinity Purification

Conjugation

Un-conjugated

Concentration	1 mg/mL
Formulation	PBS Only
Storage Stability	Store at -20°C. Recommended to aliquot into single-use vials. Supplied in 1X PBS (pH 7.4). BSA and Azide Free. Stable for 12 months from date of receipt.



Western blot analysis of extracts from HeLa, A431, Jurkat cells using [db16383](#) at 1:1000.