

Recombinant

DGRmAb®

## alpha Tubulin (DGR13966) Rabbit mAb (PBS Only)

db11363-PBS

Package : 10µg 100µg

**Product Name** : alpha Tubulin (DGR13966) Rabbit mAb (PBS Only)**Cat.No.:** db11363-PBS**Synonyms** : ALS22; TUBA1; H2-ALPHA**Application** : WB, IHC-P, ICC/IF, FC**Reactivity** : Human,Mouse,Rat**Host species** : Rabbit**Background**

Microtubules of the eukaryotic cytoskeleton perform essential and diverse functions and are composed of a heterodimer of alpha and beta tubulin. The genes encoding these microtubule constituents are part of the tubulin superfamily, which is composed of six distinct families. Genes from the alpha, beta and gamma tubulin families are found in all eukaryotes. The alpha and beta tubulins represent the major components of microtubules, while gamma tubulin plays a critical role in the nucleation of microtubule assembly. There are multiple alpha and beta tubulin genes and they are highly conserved among and between species. This gene encodes an alpha tubulin that is a highly conserved homolog of a rat testis-specific alpha tubulin. Alternatively spliced transcript variants encoding different isoforms have been found for this gene. [provided by RefSeq, Jun 2013]

**Immunogen**

A synthetic peptide of human alpha Tubulin

**Gene ID**

7277

**Swiss Prot**

P68366

**Synonyms**

ALS22; TUBA1; H2-ALPHA

**Reactivity**

Human,Mouse,Rat

**Application**

WB, IHC-P, ICC/IF, FC

**Calculated MW**

50 kDa

**Observed MW**

50 kDa

**Host species**

Rabbit

**Clonality**

Monoclonal

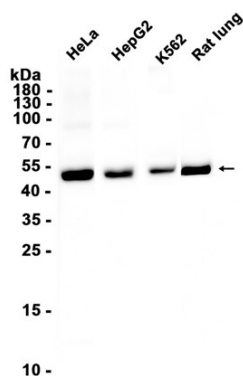
**Clonality No.**

DGR13966

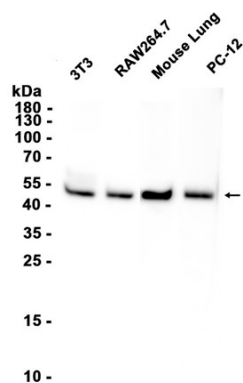
**Isotype**

IgG

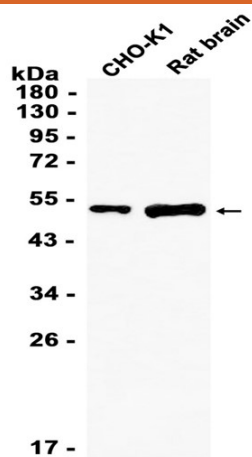
<b>Purity</b>	Affinity Purification
<b>Conjugation</b>	Un-conjugated
<b>Concentration</b>	1 mg/mL
<b>Formulation</b>	PBS Only
<b>Storage Stability</b>	Store at -20°C. Recommended to aliquot into single-use vials. Supplied in 1X PBS (pH 7.4). BSA and Azide Free. Stable for 12 months from date of receipt.



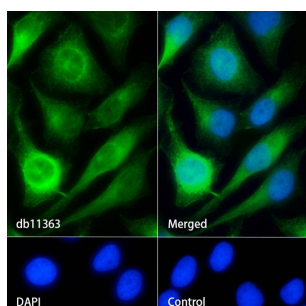
Western blot analysis of extracts from HeLa, HepG2, K562 cells and Rat lung tissue using [db11363](#) at 1:5000.



Western blot analysis of extracts from 3T3, RAW264.7, PC-12 cells and Mouse lung tissue using [db11363](#) at 1:5000.



Western blot analysis of extracts from CHO-K1 cells and Rat brain tissue using [db11363](#) at 1:1000.



Immunofluorescence analysis of HeLa cells labelling alpha Tubulin with [db11363](#).

The cells were fixed with 4% PFA (10min, RT) followed by treatment with 0.1% Triton X-100 (10min, RT), and blocked in 1% BSA/10% normal goat serum/0.3M glycine in 0.1% PBS-Tween 20 for 1h. The cells were then incubate with [db11363](#) (1:100) at room temprature for 1h, followed by a further incubation at room temperature for 45min with Goat Anti Rabbit IgG (H+L)-AF488 [db10005](#), shown in green). Nuclear DNA was labeled in blue with DAPI.

Control: Secondary antibody only.