

Recombinant

DGRmAb®

EGFR (DGR12136) Rabbit mAb (PBS Only)

db13403-PBS

Package : 10µg 100µg

Product Name : EGFR (DGR12136) Rabbit mAb (PBS Only)**Cat.No.:** db13403-PBS**Synonyms** : ERBB; HER1; mENA; ERBB1; PIG61; NISBD2**Application** : WB, IHC-P, ICC/IF, FC, IP**Reactivity** : Human,Mouse,Rat**Host species** : Rabbit**Background**

The protein encoded by this gene is a transmembrane glycoprotein that is a member of the protein kinase superfamily. This protein is a receptor for members of the epidermal growth factor family. EGFR is a cell surface protein that binds to epidermal growth factor. Binding of the protein to a ligand induces receptor dimerization and tyrosine autophosphorylation and leads to cell proliferation. Mutations in this gene are associated with lung cancer. [provided by RefSeq, Jun 2016]

Immunogen

A synthetic peptide of human EGFR

Gene ID

1956

Swiss Prot

P00533

Synonyms

ERBB; HER1; mENA; ERBB1; PIG61; NISBD2

Reactivity

Human,Mouse,Rat

Application

WB, IHC-P, ICC/IF, FC, IP

Calculated MW

134 kDa

Observed MW

175 kDa

Host species

Rabbit

Clonality

Monoclonal

Clonality No.

DGR12136

Isotype

IgG

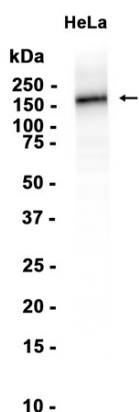
Purity

Affinity Purification

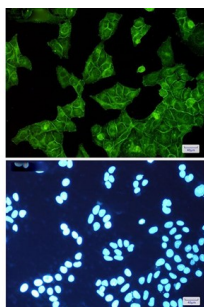
Conjugation

Un-conjugated

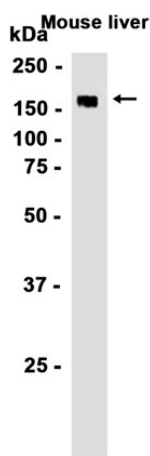
Concentration	1 mg/mL
Formulation	PBS Only
Storage Stability	Store at -20°C. Recommended to aliquot into single-use vials. Supplied in 1X PBS (pH 7.4). BSA and Azide Free. Stable for 12 months from date of receipt.



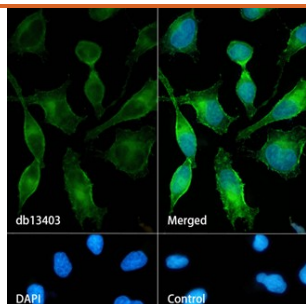
Western blot analysis of extracts from HeLa cells using [db13403](#) at 1:1000.



Immunofluorescent analysis of HeLa cells using [db13403](#) antibody (green), and DAPI (blue).



Western blot analysis of extracts from Mouse liver tissue using [db13403](#) at 1:1000.



Immunofluorescence analysis of HeLa cells labelling EGFR with **db13403**.

The cells were fixed with cold 100% methanol (10min, 4°C) and blocked in 1% BSA/10% normal goat serum/0.3M glycine in 0.1% PBS-Tween 20 for 1h. The cells were then incubate with **db13403** (1:200) at room temperature for 1h, followed by a further incubation at room temperature for 45min with Goat Anti Rabbit IgG (H+L)-AF488 (**db10005**, shown in green). Nuclear DNA was labeled in blue with DAPI.

Control: Secondary antibody only.