

Recombinant

DGRmAb®

beta Tubulin (DGR21047) Rabbit mAb (PBS Only)

db12470-PBS

Package : 10µg 100µg

Product Name : beta Tubulin (DGR21047) Rabbit mAb (PBS Only)**Cat.No.:** db12470-PBS**Synonyms** : M40; TUBB1; TUBB5; CDCBM6; CSCSC1; OK/SW-cl.56**Application** : WB, IHC-P, ICC/IF, FC**Reactivity** : Human,Mouse,Rat**Host species** : Rabbit**Background**

This gene encodes a beta tubulin protein. This protein forms a dimer with alpha tubulin and acts as a structural component of microtubules. Mutations in this gene cause cortical dysplasia, complex, with other brain malformations 6. Alternative splicing results in multiple splice variants. There are multiple pseudogenes for this gene on chromosomes 1, 6, 7, 8, 9, and 13. [provided by RefSeq, Jun 2014]

Immunogen

A synthetic peptide of human beta Tubulin

Gene ID

203068

Swiss Prot

P07437

Synonyms

M40; TUBB1; TUBB5; CDCBM6; CSCSC1; OK/SW-cl.56

Reactivity

Human,Mouse,Rat

Application

WB, IHC-P, ICC/IF, FC

Calculated MW

50 kDa

Observed MW

50 kDa

Host species

Rabbit

Clonality

Monoclonal

Clonality No.

DGR21047

Isotype

IgG

Purity

Affinity Purification

Conjugation

Un-conjugated

Concentration

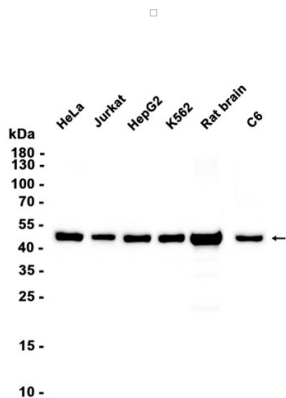
1 mg/mL

Formulation

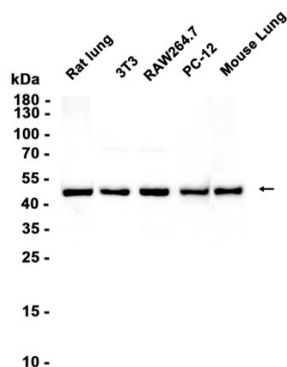
PBS Only

Storage Stability

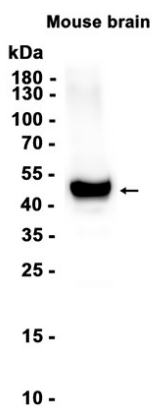
Store at -20°C. Recommended to aliquot into single-use vials. Supplied in 1X PBS (pH 7.4). BSA and Azide Free. Stable for 12 months from date of receipt.



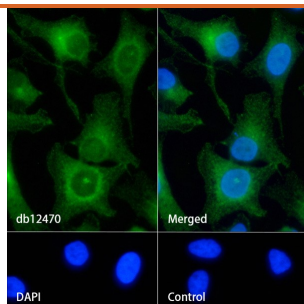
Western blot analysis of extracts from HeLa, Jurkat, HepG2, K562, C6 cells and Rat brain tissue using [db12470](#) at 1:5000.



Western blot analysis of extracts from 3T3, RAW264.7, PC-12 cells and Rat lung, Mouse lung tissues using [db12470](#) at 1:5000.



Western blot analysis of extracts from Mouse brain tissue using [db12470](#) at 1:5000.



Immunofluorescence analysis of HeLa cells labelling beta Tubulin with [db12470](#).

The cells were fixed with 4% PFA (10min, RT) followed by treatment with 0.1% Triton X-100 (10min, RT), and blocked in 1% BSA/10% normal goat serum/0.3M glycine in 0.1% PBS-Tween 20 for 1h. The cells were then incubate with [db12470](#) (1:200) at room temperature for 1h, followed by a further incubation at room temperature for 45min with Goat Anti Rabbit IgG (H+L)-AF488 [db10005](#), shown in green). Nuclear DNA was labeled in blue with DAPI.

Control: Secondary antibody only.