

Recombinant

DGRmAb®

Vinculin (DGR12059) Rabbit mAb (PBS Only)

db11010-PBS

Package : 10µg 100µg

Product Name : Vinculin (DGR12059) Rabbit mAb (PBS Only)**Cat.No.:** db11010-PBS**Synonyms** : MV; MVCL; CMD1W; CMH15; HEL114**Application** : WB, ICC/IF, FC, IP**Reactivity** : Human,Mouse,Rat**Host species** : Rabbit**Background**

Vinculin is a cytoskeletal protein associated with cell-cell and cell-matrix junctions, where it is thought to function as one of several interacting proteins involved in anchoring F-actin to the membrane. Defects in VCL are the cause of cardiomyopathy dilated type 1W. Dilated cardiomyopathy is a disorder characterized by ventricular dilation and impaired systolic function, resulting in congestive heart failure and arrhythmia. Multiple alternatively spliced transcript variants have been found for this gene, but the biological validity of some variants has not been determined. [provided by RefSeq, Jul 2008]

Immunogen

A synthetic peptide of human Vinculin

Gene ID

7414

Swiss Prot

P18206

Synonyms

MV; MVCL; CMD1W; CMH15; HEL114

Reactivity

Human,Mouse,Rat

Application

WB, ICC/IF, FC, IP

Calculated MW

124 kDa

Observed MW

124 kDa

Host species

Rabbit

Clonality

Monoclonal

Clonality No.

DGR12059

Isotype

IgG

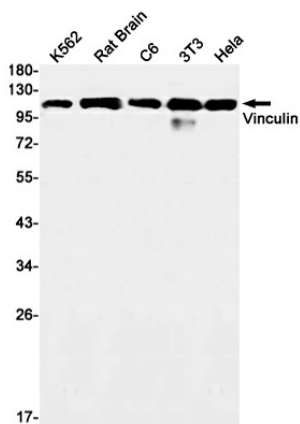
Purity

Affinity Purification

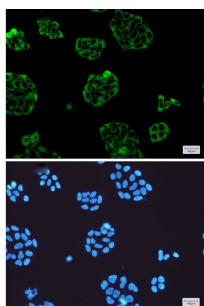
Conjugation

Un-conjugated

Concentration	1 mg/mL
Formulation	PBS Only
Storage Stability	Store at -20°C. Recommended to aliquot into single-use vials. Supplied in 1X PBS (pH 7.4). BSA and Azide Free. Stable for 12 months from date of receipt.



Western blot detection of Vinculin in K562, Rat Brain, C6, 3T3, HeLa cell lysates using Vinculin antibody (1:1000 diluted).



Immunofluorescent analysis of HeLa cells using db11010 antibody (green), and DAPI (blue).