

Recombinant

DGRmAb®

His Tag (DGR14407) Rabbit mAb (PBS Only)

db11052-PBS

Package : 10µg 100µg

Product Name : His Tag (DGR14407) Rabbit mAb (PBS Only)**Cat.No.:** db11052-PBS**Application** : WB, IHC-P, ICC/IF, FC, IP**Reactivity** : Transfected**Host species** : Rabbit**Background**

Protein tags are protein or peptide sequences located either on the C- or N- terminal of the target protein, which facilitates one or several of the following characteristics: solubility, detection, purification, localization and expression. His tag is often used for affinity purification and binding assays. Expressed His tagged proteins can be purified and detected easily because the string of histidine residues binds to several types of immobilized metal ions, including nickel, cobalt and copper, under specific buffer conditions. The His tag antibody is a useful tool for monitoring of the His-tagged proteins, and recognizes His-tags placed at N-terminal, C-terminal, and internal regions of fusion proteins expressed in bacteria, insect, and mammalian cells.

Immunogen

A synthetic peptide of His tag

Reactivity

Transfected

Application

WB, IHC-P, ICC/IF, FC, IP

Calculated MW

1 kDa

Observed MW

According to the fused protein

Host species

Rabbit

Clonality

Monoclonal

Clonality No.

DGR14407

Isotype

IgG

Purity

Affinity Purification

Conjugation

Un-conjugated

Concentration

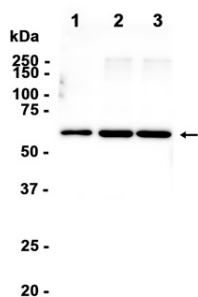
1 mg/mL

Formulation

PBS Only

Storage Stability

Store at -20°C. Recommended to aliquot into single-use vials. Supplied in 1X PBS (pH 7.4). BSA and Azide Free. Stable for 12 months from date of receipt.



Western blot detection of His Tag in Multi-tag Protein, Multi-tag Protein in 293, Multi-tag Protein in HeLa cell lysates using His Tag antibody(1:1000 diluted).

- 1. Multi-tag Protein
- 2. Multi-tag Protein in 293
- 3. Multi-tag Protein in HeLa