

Recombinant

DGRmAb®

**SMARCD1 (DGR34019) Rabbit mAb (PBS Only)**

db11072-PBS

Package : 10µg 100µg

**Product Name** : SMARCD1 (DGR34019) Rabbit mAb (PBS Only)**Cat.No.:** db11072-PBS**Synonyms** : CSS11; Rsc6p; BAF60A; CRACD1**Application** : WB, ICC/IF, FC, IP**Reactivity** : Human,Mouse**Host species** : Rabbit**Background**

The protein encoded by this gene is a member of the SWI/SNF family of proteins, whose members display helicase and ATPase activities and which are thought to regulate transcription of certain genes by altering the chromatin structure around those genes. The encoded protein is part of the large ATP-dependent chromatin remodeling complex SNF/SWI and has sequence similarity to the yeast Swp73 protein. Two transcript variants encoding different isoforms have been found for this gene. [provided by RefSeq, Jul 2008]

**Immunogen**

A synthetic peptide of human SMARCD1

**Gene ID**

6602

**Swiss Prot**

Q96GM5

**Synonyms**

CSS11; Rsc6p; BAF60A; CRACD1

**Reactivity**

Human,Mouse

**Application**

WB, ICC/IF, FC, IP

**Calculated MW**

58 kDa

**Observed MW**

58 kDa

**Host species**

Rabbit

**Clonality**

Monoclonal

**Clonality No.**

DGR34019

**Isotype**

IgG

**Purity**

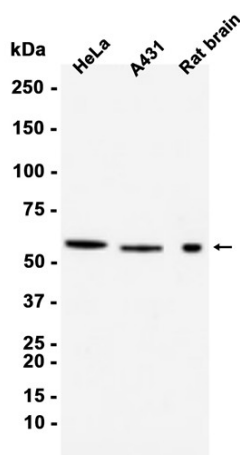
Affinity Purification

**Conjugation**

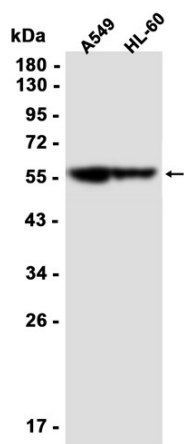
Un-conjugated

<b>Concentration</b>	1 mg/mL
<b>Formulation</b>	PBS Only
<b>Storage Stability</b>	Store at -20°C. Recommended to aliquot into single-use vials. Supplied in 1X PBS (pH 7.4). BSA and Azide Free. Stable for 12 months from date of receipt.

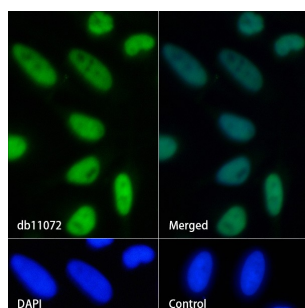
Western blot analysis of extracts from HeLa, A431 cells and Rat brain tissue using [db11072](#) at 1:1000.



Western blot analysis of extracts from A549, HL-60 cells using [db11072](#) at 1:1000.



Immunofluorescence analysis of HeLa cells labelling SMARCD1 with [db11072](#).



The cells were fixed with 4% PFA (10min, RT) followed by treatment with 0.1% Triton X-100 (10min, RT), and blocked in 1% BSA/10% normal goat serum/0.3M glycine in 0.1% PBS-Tween 20 for 1h. The cells were then incubate with [db11072](#) (1:50) at room temprature for 1h, followed by a further incubation at room temperature for 45min with Goat Anti Rabbit IgG (H+L)-AF488 ([db10005](#), shown in green). Nuclear DNA was labeled in blue with DAPI.

Control: Secondary antibody only.