

Recombinant

DGRmAb®

Phospho-BRAF (Thr401) (DGR12756) Rabbit mAb (PBS Only)

db11119-PBS

Package : 10µg 100µg

Product Name : Phospho-BRAF (Thr401) (DGR12756) Rabbit mAb (PBS Only)**Cat.No.:** db11119-PBS**Synonyms** : NS7; B-raf; BRAF1; RAFB1; B-RAF1**Application** : WB**Reactivity** : Human,Mouse,Rat**Host species** : Rabbit**Background**

This gene encodes a protein belonging to the RAF family of serine/threonine protein kinases. This protein plays a role in regulating the MAP kinase/ERK signaling pathway, which affects cell division, differentiation, and secretion. Mutations in this gene, most commonly the V600E mutation, are the most frequently identified cancer-causing mutations in melanoma, and have been identified in various other cancers as well, including non-Hodgkin lymphoma, colorectal cancer, thyroid carcinoma, non-small cell lung carcinoma, hairy cell leukemia and adenocarcinoma of lung. Mutations in this gene are also associated with cardiofaciocutaneous, Noonan, and Costello syndromes, which exhibit overlapping phenotypes. A pseudogene of this gene has been identified on the X chromosome. [provided by RefSeq, Aug 2017]

Immunogen

A synthetic phosphopeptide corresponding to residues surrounding Thr401 of human B Raf

Gene ID

673

Swiss Prot

P15056

Synonyms

NS7; B-raf; BRAF1; RAFB1; B-RAF1

Reactivity

Human,Mouse,Rat

Application

WB

Calculated MW

84 kDa

Observed MW

84 kDa

Host species

Rabbit

Clonality

Monoclonal

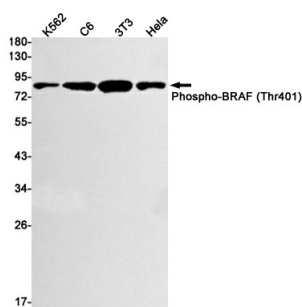
Clonality No.

DGR12756

Isotype

IgG

Purity	Affinity Purification
Conjugation	Un-conjugated
Concentration	1 mg/mL
Formulation	PBS Only
Storage Stability	Store at -20°C. Recommended to aliquot into single-use vials. Supplied in 1X PBS (pH 7.4). BSA and Azide Free. Stable for 12 months from date of receipt.



Western blot detection of Phospho-BRAF (Thr401) in K562,C6,3T3,Hela cell lysates using Phospho-BRAF (Thr401) antibody(1:1000 diluted).