

Recombinant

DGRmAb®

ROCK1 (DGR12762) Rabbit mAb (PBS Only)

db11120-PBS

Package : 100µg

Product Name : ROCK1 (DGR12762) Rabbit mAb (PBS Only)**Cat.No.:** db11120-PBS**Synonyms :** ROCK-I; P160ROCK**Application :** WB, IHC-P, ICC/IF, FC, IP**Reactivity :** Human,Mouse,Rat**Host species :** Rabbit**Background**

This gene encodes a protein serine/threonine kinase that is activated when bound to the GTP-bound form of Rho. The small GTPase Rho regulates formation of focal adhesions and stress fibers of fibroblasts, as well as adhesion and aggregation of platelets and lymphocytes by shuttling between the inactive GDP-bound form and the active GTP-bound form. Rho is also essential in cytokinesis and plays a role in transcriptional activation by serum response factor. This protein, a downstream effector of Rho, phosphorylates and activates LIM kinase, which in turn, phosphorylates cofilin, inhibiting its actin-depolymerizing activity. A pseudogene, related to this gene, is also located on chromosome 18. [provided by RefSeq, Aug 2015]

Immunogen

A synthetic peptide of human ROCK1

Gene ID

6093

Swiss Prot

Q13464

Synonyms

ROCK-I; P160ROCK

Reactivity

Human,Mouse,Rat

Application

WB, IHC-P, ICC/IF, FC, IP

Calculated MW

158 kDa

Observed MW

158 kDa

Host species

Rabbit

Clonality

Monoclonal

Clonality No.

DGR12762

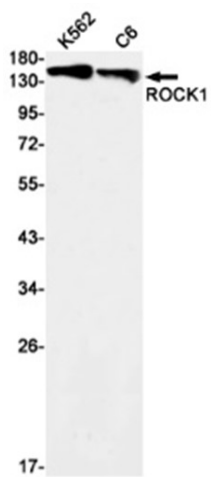
Isotype

IgG

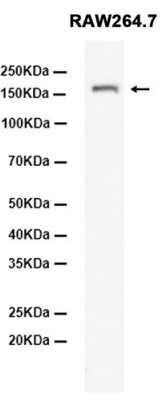
Purity

Affinity Purification

Conjugation	Un-conjugated
Concentration	1 mg/mL
Formulation	PBS Only
Storage Stability	Store at -20°C. Recommended to aliquot into single-use vials. Supplied in 1X PBS (pH 7.4). BSA and Azide Free. Stable for 12 months from date of receipt.



Western blot detection of ROCK1 in K562,C6 cell lysates using ROCK1 antibody (1:1000 diluted).



Western blot analysis of extracts from RAW264.7 cells using [db11120](#) at 1:1000.